

THE Illinois Chapter's
LINCOLN LOG

1987 - 1988
1988 - 1989
1989 - 1990
2002 - 2003
2003 - 2004
2004 - 2005
2005 -2006
1st Place



CLIFFS NOTES on

UB04 and NPI

Award winning Ezine for the Illinois AAHAM Chapter



Featured Articles:

- * *Stay in Touch*
- * *More People Aren't doing Today what They Will not do Tomorrow*
- * *Cliff Notes for the UB-04 & NPI*
- * *Work / Life Balance Equals Productivity*

Next Meeting June 21-22, Bloomington, IL



THE LINCOLN LOG

TABLE OF CONTENTS

Feature Articles

Stay “ In Touch ” Pages 7-8
By Amanda Gore

More People Aren’t doing Today what They Will not do Tomorrow Pages 9-10
By Barb Bartlein

Cliff Notes for the UB-04 & NPI Pages 11-12
By Jimmi Evans

Work / Life Balance Equals Productivity Page 13
By Jane Boucher

Legislation Day Pages 15-16
By Bill Carlson 1st VP IL AAHAM

Should Illinois AAHAM form a PAC Page 14
By John McGlasson

Departments

Corporate Sponsors Page 3

President’s Message Page 4

Editor’s Corner Pages 15-16

Certification Corner Page 17

2005 -2006 Calendar Page 19

Board of Directors Page 21

LINCOLN LOG EDITORIAL POLICY & OBJECTIVE

The LINCOLN LOG magazine is published four times annually by the AAHAM ILLINOIS CHAPTER to update the membership regarding chapter and national activities as well as to provide information useful to health care administrative professionals.

Opinions expressed in articles or features are those of the author(s) and do not necessarily reflect the views of the Illinois Chapter - AAHAM, the National AAHAM organization or the editor.

Reproduction and/ or use of the format or the content of this publication without the expressed permission of the author (s) or the editor is prohibited. © Copyright 2007

Lincoln Log Editor
Trace Manning
trace.manning@st-johns.org



IL AAHAM CORPORATE SPONSORS

2006 – 2007



Summer 2007

PLATINUM

| | | |
|---|----------------|-------------------------------|
| H&R Accounts, Inc. / Med Pay Management Systems | Ron Snyder | rsnyder@hraccounts.com |
| Rockford Mercantile Agency, Inc. | Dick Brown | rlb@rmacollections.com |
| Allied Business Accounts, Inc. | Betty Burch | bburch@abacollect.com |
| Accordis, Inc. | Jerry Westfall | jwestfall@accordisinc.com |
| Trackers, Inc. | Eric Ludtke | Eric@trackerscorp.com |
| CB Accounts | Bruce Tichenor | bruce.tichenor@cbaccounts.com |

GOLD

| | | |
|------------------------------------|----------------|------------------------|
| Medical Learning, Inc. | John Anderson | janderson@medlearn.com |
| Nebo Systems, Inc. | Jim Dufelmeier | jim@nebo.com |
| Medical Recovery Specialists, Inc. | Keith Bull | kbull@medrecovery.com |
| RRCA Accounts Management | Kevin Heller | rcca@essex1.com |

SILVER

| | | |
|--------------------------------------|-------------------|---------------------------|
| Gustafson & Associates, Inc. | Bobette Gustafson | b_Gustafson@GustAssoc.com |
| Healthcare Financial Resources, Inc. | David Dorman | dcdorman@hfri.net |

BRONZE

| | | |
|---|--------------------|-------------------------------------|
| AAMS | Luke Gruber | lgruber@aams.biz |
| R&B Solutions | Dennis Brebner | dbrebner@randbsolutions.com |
| Eagle Recovery Associates, Inc. | Nancy Vollmer | nvollmer@eaglerecovery.net |
| Van Ru Credit Corporation | Mike Howard | corporate@vanru.com |
| Pellettieri & Associates, Ltd. | Carl Pellettieri | cpellettieri@pellettieri.net |
| Managed Care Partners, Inc. | Jim Richmond | jrichmond@mngdcare.com |
| State Collection Service, Inc. | Ted Witt | tedw@stcol.com |
| ProCom Services of Illinois, Inc. | John McGlasson | jmx2@frontiernet.net |
| United Collection Bureau, Inc. | Linda McClelland | llmcclelland@ubcinc.com |
| General Service Bureau / Early Out Services | Brad Uhlenhopp | buhlenhopp@gsbcollect.com |
| Great Lakes Family of Companies | James A. Knepper | JAKnepper@aol.com |
| Outreach Services of Illinois | Joe Schoenig | jschoenig@outreachservices.com |
| Medical Reimbursements | Veronica Modricker | modickerv@medicalreimbursements.com |
| HRS Erase | Megan Logan | mlogan@hrserase.com |
| Array Services Group | Chuck Seviour | chuck.seviour@arraysg.com |
| Cymetrix | Mary Ann Musielak | maryann.Musielak@cymetrix.com |

Thank you to all Corporate Sponsors for another great year!





Illinois AAHAM President's Message

John Currier

Dear Fellow IL AAHAM members:

April showers bring May flowers and April snow brings frustration. Never fear, I think SPRING has arrived. [And I guess I should add May flowers bring UB 04 !!!!!!!!!!!!!!!]

Some exciting events have taken place since my last letter. In March, six of us from IL AAHAM attended Legislative Day in Washington, DC. What an experience that was! Not only was it very exciting to visit with our legislatures, but we had a huge impact on the contingency plan for NPI's. NPI's was the basis for our visit, and shortly after was the announcement of the contingency plan. It is good to know that our voices are heard and the system does work. As you plan ahead for next year with your budget, see if you can't put Legislative Day in the plan. It truly is a worthwhile experience and proof that AAHAM does work for you.

In April, Richard and I traveled to Kansas City to attend the Spring Educational Meeting of the Missouri AAHAM Chapter. We did two programs for them, filling one morning of the two day program. We also attended their board meeting as resources to assist them in growing the Hawthorne Chapter. This was a part of the Chapter Mentor program proposed and accepted by National AAHAM by the Illinois Chapter. We had a great time networking with another chapter of our peers. Bill Carlson joined us at the meeting.

This is an election year for National AAHAM. Watch your email for details. Once again, voting will be electronic, making it very simple to exercise your right to vote for the officers to lead our organization. Your vote really does count, so please VOTE. I would like for IL AAHAM to be recognized at the national level by "getting out the vote". This year, one of our IL members will be on the national ballot, so this year in particular we want to be supportive and VOTE. How exciting it will be to have an IL AAHAM member represent us as a National Officer. IL is well known at the National level and this will certainly add to our recognition.

This is also an election year for your IL AAHAM Board of Directors. Here is your opportunity to elect the officers and directors that will continue to lead our organization at the local level. Maybe YOU would like to serve on the IL AAHAM Board? Getting involved and active on the Board of Directors is very rewarding and we need energetic members to be a part of the board. If you might be interested, please contact me or any board member for more information.

I apologize for the "matter of fact" format of this letter, but I had a lot I wanted to include to keep you informed of the happenings of AAHAM. On a personal note, I hope this finds all of you well and I look forward to seeing everyone very soon. Take care.

Yours in AAHAM,

John Currier

When You Need A Partner In Your Business Office...

Allied Business
Accounts, Inc.

Health Care Billing
Services, Inc.

Professional
Billing Services

Allied Business Accounts, Inc.
Health Care Billing Services, Inc.
1-800-533-0216

Accounts Receivable Management Services

Allied Business Accounts. Inc.

William Carlson Betty Burch

800-533-0216

wc@abacollect.com

bburch@abacollect.com

RRCA Accounts Management, Inc.



RRCA
 Kevin Heller, President
 312 Locust Sterling, IL 61081
(815) 626-6069
 rrca@essex1.com



Thanks and congratulations to Illinois AAHAM, it's members and the Board of Directors for 25 years of service to the medical community.

eCare® eMT eNcounter Management Toolkit

Take control of the Front End

With the right tools you can do anything. Let the **hard hat experts** at Nebo help you find the **right tools** for all your patient encounter needs.

- Self Service Kiosks
- Integrated Eligibility
- Address Verification
- eOrders—Electronic Patient Orders
- Medical Necessity
- Pre-Certification
- Financial Counseling Worklist
- Patient Financial Assessment
- Patient Payment Estimation
- Payment Processing
- Automated QA



NEBO
 SYSTEMS, INC.

Contact Becky Funk
 becky@nebo.com
 309-747-3235

Don't forget—we have the backend covered too with eCare® Claims Management System (CMS)



Stay "In Touch"

by Amanda Gore

You can fool your mind, but you can't fool your body. Stress hormones may have been running around your system for years – causing dramatic changes in your body – without you acknowledging or recognizing you're at risk.

Even if you convince your mind you're feeling fine, all is well, and that stress is not a problem for you – you can't deny it in your body. Your body stores stress. It stores it up in all sorts of ways, such as tight muscles and ligaments, internal organs that don't function well, chronic fatigue, listlessness, ulcers, who knows what else? This all sounds very negative, and it is ... but help is on the way!

New research into what makes humans ill in today's society is demonstrating strong links between unresolved stress, holding onto "stuff" and disease. This unresolved stress is buried deep inside you creating havoc within your bodily systems and rapidly increasing the aging process.

One of the worst effects of prolonged unresolved stress is damage to the immune system. Your immune system is the part of you that fights off viruses and other diseases. It's essential to have a healthy and strong immune system if you want to be well and free of colds, flus, and other illnesses.

So what can you do? This article includes some very simple and effective strategies to help burn off stress as it occurs, short-circuiting the damage that could be done.

First, when you stimulate the skin, you release more immune system boosting chemicals into your system than if you stimulate any other structure or organ in your body. In 1976, doctors at the University of Miami ran an experiment in which they took two groups of premature babies. One group was treated in the normal, medical, hygienic way and the other group was treated similarly - except they had "tactile stimulation" three times a day.

The results were dramatic. Although fed on demand with the same formula, the touched babies gained 47% more weight every day than the control group, they were more alert and started to act like normally delivered babies sooner. They also left the hospital a week sooner than the control group. The only difference between the two was the amount of touching given to the babies. What a shame these results aren't publicized more widely! I guess it just proves that *love, caring and touching are fundamental for human wellness.*

Many other studies indicate the importance of touch for our health. For example, having a pet to stroke can help lower your blood pressure. Sometimes doctors even recommend that people recovering from heart attacks get a pet and make time to pat the pet as part of their treatment!

If you accept that the body stores stress, and that we may not be aware of this happening, one of the easiest and most pleasant things we can do to eliminate that stress is to have a massage every once in awhile! Choose whatever sort of massage you like and make a commitment to yourself to have one at least every few weeks, or as often as you need or would like to have one. "Eeek" I can hear some of you cry! "I can't afford that. I don't have time. I only do that when I want to pamper myself." WRONG!

Massage should no longer be considered a luxury or pampering. It's essential for our wellness if we look at what we understand about the body and mind. Make time and save money so you can have one as often as possible. Or if you live with a significant other, massage each other at home. Build your relationship while boosting your immune system!

Here's another idea. Hug your children a lot, if you don't already. Otherwise they might literally shrivel up and wither away without it! What if you're not a "touchy" person? Maybe your parents didn't touch much or touch you much and so you grew up learning from a model where touching was taboo. If that's the case, do whatever you have to do to *build a bridge and get over it!* If you don't like to touch or be touched, then you are likely to be sick more often than those who do like it!

When you come in the door at night, do you greet your partner with a peck on the cheek and then spend five minutes playing with the dog or cat? Not only does this make the person feel less important than the animal, but it also deprives both of you from a great opportunity to communicate AND boost your immune system at the same time!

I've had people at conferences (almost always women) who have said "do you know, sometimes I lie on the floor next to the dog ... just to get the same attention!" TRUE. The men retaliate with "yea, but at least the dog's pleased to see me!" So perhaps men and women need to talk about the touching issue a bit more?

continued on page 8

Stay "In Touch" ... continued

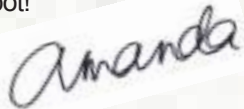
by Amanda Gore

Here's another simple way to boost your immune system, improve communication and the relationship between you and your partner. Give the person a seven second kiss and hug when you walk in the door. Most people gawk when I say this and squeak "how long?!" Seven seconds really isn't that long (and men, you don't need to be watching the clock behind your partner's head!).

Hugs are also great for your physiology. Did you know that a hug actually changes the chemical makeup of your body? As long as you like the hug-er, your body will fill up with endorphins and you'll reduce the amount of nasty stress chemicals spreading their chaos. So go out and give someone a hug today!

I hope you will all try some of these strategies to help lower your stress. I think you'll be surprised at the beneficial results from this new form of wellness prescription ... it really works!

Zoot-Zoot!



ALLEVENTQUERIES ...

SpeakersOffice, Inc., 5927 Balfour Court Ste. 103
 Carlsbad, CA 92008
 Ph: 760-603-8110, Cell: 760-815-4624, Fax: 760-603-8010
magic@amandagore.com
 Holli, Michele, Cassie or Jenny will know where I am!

ALL PRODUCT QUERIES & PERSONAL ENQUIRIES USA ...

5526 Dyer St., Suite 109, Dallas TX 75206
 Ph: 214-361-8824, Office Cell (Ken): 214-475-0644
 Fax: 214-361-8835, Amanda Cell: 469-371-0175

FOR COACHING INQUIRIES...

Ken Wright, The Wright Coach
 Ph: 214-475-0644, ken@TheWrightCoaching.com
 Learn more at: www.TheWrightCoaching.com

AUSTRALIA...

Julianna Millar, 56 Must
 Circuit, Calwell, Canberra ACT 2905 julie@amandagore.com
 Ph: 612-62983144, Fax: 612-6298 347

Medical Recovery Specialists, Inc.

Keith Bull

Vice President, Sales & Marketing

kbull@medrecovery.com

2250 East Devon, Suite 352, Des Plaines, IL 60018

Phone: 847-227-2152 Fax: 847-227-2151

Toll Free: 866-317-5533



More People Aren't Doing Today



The People Pro
Barbara Bartlein

What They Won't Do Tomorrow

Procrastination is on the rise according to a new study published by the American Psychological Association. The 10 years of research, which was only suppose to take five years, was conducted by professor Piers Steel from the University of Calgary. He found that procrastination is on the rise and makes people poorer, fatter, and unhappier.

Dr. Steel has found that procrastination is pervasive and affects individuals, families, communities and business. "Ninety-five percent of us procrastinate at least occasionally and about 15% - 20% of do it consistently and problematically," according to Steel. "Also, there are historical records of people procrastinating going back at least 3,000 years." According to this massive study, in 1978, only about 5% of Americans viewed themselves as chronic procrastinators. It is now 26%.

His comprehensive analysis of procrastination research, published in the recent edition of the American Psychological Association's Psychological Bulletin, presents some surprising conclusions on the subject, such as:

- Most people will not follow through with their New Year's resolutions
- Perfectionism is not at the root of procrastination

"Essentially, procrastinators have less confidence in themselves, less expectancy that they can actually complete a task," Steel says. "Perfectionism is not the culprit. In fact, perfectionists actually procrastinate less, but they worry about it more."

Some other behaviors that predict procrastination include: task aversiveness, impulsiveness, distractibility, and how much a person is motivated to achieve. Not all delays can be considered procrastination; the key is that a person must believe it would be better to start working on given tasks immediately, but still not start.

There are many theories on why people procrastinate, and Dr. Steel has examined the four most popular ones generally promoted.

· **Anxiety: Fear of Failure and Perfectionism**

People are thought to procrastinate on tasks that are stressful. Therefore, those who are more susceptible to experiencing stress should procrastinate more. This theory is not supported by research. It may explain why we might avoid tasks entirely, but not why we delay them. In fact, more anxiety is experienced as we near a deadline, so procrastination appears to be a way of increasing anxiety, not reducing it. Research evidence indicates a weak or no relationship between anxiety and irrational beliefs and procrastination. In fact, self-perfectionists actually report less procrastination than other people.

· **Self-Handicapping**

This refers to the habit of placing obstacles that interfere with their own good performance. The motivation is often to protect self-esteem by giving them an "out" if they fail to do well. While there is some overlap of symptoms with procrastination, it has different causes and treatment.

· **Rebelliousness**

According to some research, rebelliousness, hostility and disagreeableness are thought to be major motivations for procrastination. While parents of teenagers may disagree, this theory is not supported. It may explain why we might avoid tasks entirely, but not why we delay them. In fact, we appear more autonomous by just not doing a task.

By doing it at the last minute, procrastination may appear to be "caving in" to the demands.

Temporal Motivation Theory (TMT)

Steel identifies this theory as "cutting edge" based on an equation that evaluates people's decisions. He has found that people will low levels of self-

continued



More People Aren't Doing Today

Barbara Bartlein

efficacy or feelings of competence, procrastinate more. Procrastination is also strongly associated with the value of the task. The more unpleasant it is viewed to be, the more likely to be delayed. Steel found that people who are more distractible, impulsive, and have less self-control tend to procrastinate more.

Procrastination is strongly associated with time delay. The closer we are to realizing the goal, the harder we work at it. In fact, work often expands to the time allotted for completion. As Johnny Carson once said, "If you have all week to do a TV show, it will take you all week. If you have a show everyday, you get it done everyday."

The TMT theory also predicts an intention-action gap, where we intend to work but fail to act on our intentions. Procrastinators often have many intentions but tend to fail to put them into action.

What They Won't Do Tomorrow

Interested in an evaluation of your procrastination? Log on to www.procrastinus.com to participate in online study. You will receive an evaluation of your procrastination along with suggestions to reduce delaying what you need to get done. Do it today, not tomorrow.

As Mark Twain remarked, "Never put off till tomorrow, what you can do the day after tomorrow."

Barbara Bartlein is the PeoplePro®. She offers keynotes, seminars and consultation to help you build your business. She can be reached at 888-747-9953, by e-mail at: barb@thepeoplepro.com or visit her website at www.ThePeoplePro.com



For the second meeting in a row IL AAHAM has set another record for the number of "first time attendees" at the 2007 Spring Meeting in Peoria, IL

Welcome
New Illinois AAHAM
2007 Members



James Meyer
Sheri Morehead
Ann Larson
Linda Stimart
Karen Diggs
Randy Gelb
Shelly Schoolman

Account Executive, Promotion Support Service
Patient Account Rep., St Joseph's Hospital
Patient Account Analyst, Bromenn Hospital
PFS Director, SVA Healthcare Services
PFS Director, Lawrence County Memorial Hospital
Executive Director, Illinois Collection Service
PFS Director, Iroquois Memorial Hospital



CLIFF NOTES on

UB-04 and NPI's

By *Jimmi Evans*

Everyone has heard about the UB-04 and the NPI's by now and surely you could write a short book about each one but what if all we want are the "CliffNotes" to refer to? If you missed the AAHAM meeting in East Peoria or if you didn't keep your handouts from there, what we oftentimes need is just a listing of what is going to be different. Our employees just want to know the bottom line of what we want them to do.

UB-04

The deadline for use of the UB-04 is still May 22, 2007. Medicare will reject any UB-92 claims after that date. Don't even try to sneak one in as an adjustment claim. It will be rejected. One note is that Illinois Public Aid will NOT be accepting the UB-04 as we are told they will not be ready. Medicaid will still need to receive the UB-92. Hopefully you have a billing service that can still bill Illinois Public Aid on the UB-92.

Some of the former data on the UB-92 will be changed or eliminated:

OUT WITH THE OLD

Form Locator 7: Covered days have been converted to a Value Code
 Form Locator 8: Non covered days have been converted to a Value Code
 Form Locator 9: Coinsurance days have been converted to a Value Code
 Form Locator 10: Lifetime Reserve Days have been converted to a Value Code
 Form Locator 16: Patient marital status has been ELIMINATED
 Form Locator 64: Employment status code has been ELIMINATED
 Form Locator 66: Employer location has been ELIMINATED
 Form Locator 79: Procedure coding method used has been ELIMINATED
 Form Locator 85: Provider representative signature has been ELIMINATED
 Form Locator 86: Provider representative signature date has been ELIMINATED

IN WITH THE NEW

Form Locator 2: Pay to location
 Form Locator 8: Patient name-ID
 Form Locator 29a: Accident state (where accident occurred)
 Form Locator 43 – 44: Page ___ of ___
 Form Locator 45: Creation date
 Form Locator 56: National Provider Identification (NPI)
 Form Locator 57: Other Payer Identification
 Form Locator 66: International Classification of diseases (ICD-9)
 Form Locator 71: Prospective Payment System (PPS) Code
 Form Locator 76: NPI for attending physicians
 Form Locator 77: NPI for operating physicians
 Form Locator 78, 79: NPI for other physicians
 Form Locator 81: Code – Code (overflow field for additional codes that do not fit into other fields)

UB-04 and NPI's

THE REVISED 1500 FORM

The revised 1500 implementation date has been moved from April 1, 2007, to NO SOONER than June 1, 2007, due to discrepancies in the printed forms.

NPI (NATIONAL PROVIDER IDENTIFICATION)

The elusive NPI has had us all scrambling for several weeks or even months now. The physician will no longer need a UPIN (Universal Provider Identification Number). Instead, all providers will need a NPI which includes hospitals, insurance companies and physicians. At first the deadline for the NPI was May 22, 2007 just like the UB-04. However, some of the smaller insurance companies and even some physicians will not have their NPI by that date. Therefore, that deadline has been extended for a year if they meet the criteria. If we have the NPI, we are to use it on the UB-04.

SHARING WITH OTHERS

Most of us have our NPI's. We must be mindful of getting that information to those who need it and at the same time we need to get the NPI's for those who will be noted on our UB-04 as the various physicians. Be sure you have shared with those who need the NPI's. Below is a sample check list. Perhaps you can think of other instances when the NPI's need to be shared.

Does your billing office personnel have your provider's NPI at hand if an insurance calls for it?

Have you traded NPI's with your managed Care partners?

Have you notified insurances you normally bill of your NPI?

Have you obtained a listing of all of your physician's NPI's?

Does your scheduling and registration personnel have a copy of that listing?

What if a physician does not have his NPI? Does his office know that he will not be able to place orders for a patient because we will not be able to bill without it? Who is making those calls? Do you just assume that it is Administration? Does Registration know they must have the NPI for that physician that is sending the patient to us?

Remember, claims that have missing information are invalid claims. Invalid claims do not receive payment. Take it upon yourself to be sure that SOMEONE in your organization has your UB-04 ready to go and has your NPI numbers all ready. If they are not in order, it is OUR receivables that will suffer for it and WE are the ones responsible for the receivables.

Work/Life Balance Equals Productivity



By Jane Boucher

As employees, we love work/life programs. As managers, we're not so sure. We want to believe that things like flextime, telecommuting and on-site day-care centers make for happier, more productive employees but most of us really don't know if they are making a difference where it counts - on the bottom line.

Before your organization begins a work/life initiative, you should make sure that you need one.

Go to your employees and conduct surveys to determine job satisfaction. Collective effort is more likely to produce a long-term solution that benefits everyone. Measure by looking at turnover, absenteeism and levels of customer satisfaction. The key is determining a set of useful measurements.

If you determine a work/life program is needed, determine the cost of the initiative. An on-site day-care center is easily estimated as well as telecommuting if you supply equipment for the home office. Set a time frame for testing your initiative and when returning to check the progress, check your measurements on increased productivity and lower absenteeism.

Research shows that employees regard the ability to balance their personal and work lives as a top priority. As companies recognize a link between work/life balance and employee retention, they are turning their attention to managers to serve as gatekeepers to work/life programs. Supervisors must actively support these programs and encourage their employees to use them. Employees must have equal access to policies.

To be an effective manager and to have a productive workforce, you really have to look at the diversity among the workforce - their needs, and how these needs can best be met - while still assuring the productivity of the organization. The bottom line is still productivity and managers will always be the ones who hold the key to work/life success.

Jane Boucher is a best-selling author and professional speaker
with offices in Ohio and Nevada.
Reach her at 775-853-0226, 937-416-9881 or jane@janeboucher.com.
Her websites are www.janeboucher.com and www.janeboucher.org

Jane Boucher
P.O. Box 18368
Reno, NV 89511
937-416-9881
e-mail jane@janeboucher.com



Should Illinois AAHAM form a PAC ?

By John McGlasson

Your Legislative Action Committee has recommended that Illinois AAHAM form a political action committee, commonly know as a “PAC”. Organizations, companies, and labor unions form PACs to insure compliance with Illinois Campaign Disclosure Act ... “which applies to candidates, individuals groups of persons or any organizations, political or otherwise, who: have accepted contributions or made expenditures in excess of \$3000 within a 12-month period, in support of or in opposition to ... any question of public policy ...” The threshold for nonprofit organizations is \$5000.

While it is unlikely that Illinois AAHAM will ever raise or expend amounts that large, we have engaged in political activity, such as our efforts last year in opposition to House Bills 4999 and 5000. Whenever a group such as ours does this; we are subject to the scrutiny of the State Board of Elections, the press, and those, whose views differ from ours.

By forming a political action committee and tracking our activities and expenditures we can be certain that we are doing the correct and legal things. As we traded emails, made phone calls, and discussed these issues at our meetings we were practicing the art of politics.

If we have a PAC we could:

- * Pay expenses for our members to attend meetings with legislators or testify at a legislative hearing.
- * Prepare and mail position papers to newspapers, other organizations or legislators.
- * Rent a bus to take members or the employees of our facilities to Springfield, for a rally.
- * Accept contributions from members or others to support our efforts.

The fact that we have never done this or that is unlikely that we ever will, does not mean that is not a good idea to be prepared for the future. There is little doubt that health care will be one of the most debated of public issues for many years to come.

With a PAC we can be certain that we are complying with the law. We will be certain that our organization and our employers will never be accused of improperly attempting to influence governmental policy.

If you wish to learn more about political action committees, you can go to the following web sites:

- www.elections.il.gov/CampaignDisclosure/DisclosureGuide.aspx
- www.ihatoday.org/advocacy/state/state_pac.html

Your legislative action committee will discuss the concept again at the June Meeting. You will be given the opportunity to vote online after that. Please direct any questions to mcglasson.john@pro-comservices.com .

As a leading accounts receivable management company since 1953, Van Ru Credit Corporation has the experience and expertise to increase your recoveries and improve your bottom line. We combine the efficiency and technological sophistication of a large organization with the personalized service of a small agency to produce quality results for our clients.

VAN RU
CREDIT CORPORATION

For more information, visit us at www.vanru.com, or contact Michael Howard at 800.468.2678 extension 6608 or corporate@vanru.com.



2003

2004

Editors' Corner

2005

2006

Trace Manning



Comments from Bill Carlson on the AAHAM Legislative Day in Washington, D.C.

My first Legislative Day experience was an “unqualified” success. After an uneventful flight into Reagan International we grabbed a cab to the beautiful Sofitel Lafayette Square Hotel in the heart of DC, the base for our AAHAM crew.

The balmy 82-degree weather, a room upgrade and a cocktail or two set the stage for a great experience.

Although our Illinois numbers were small, we were well represented in DC as Dick Wytrwal, Judi Lines, John Currier, Liz Baptist and Margaret White joined me.

The evening “Welcome Reception” at The Sofitel covered the finer points of grassroots advocacy with tips on presenting our concerns to our Senators and their staffers. Tanja Twist, AAHAM Legislative Chair and Paul Miller our lobbyist, did a great job in presenting our positions, specifically the NPI and a contingency plan, and briefed us on what to expect as we called on our Senators on Thursday. Jim Whicker and Bob DeBiase, AAHAM President, also spoke about the NPI and EDI concerns.

Our Legislative Day began with presentations at The American Trucking Association building by Dr. Admiral Agwunobi, Assistant Secretary for Health with the Department of Health and Human Services and Shawn Maree Bishop, a senior staffer to Max Bacus (D-MT) of the Senate Finance Committee. Both speakers expressed a genuine interest in the NPI issue, taking notes of our questions and concerns.

At noon, our walk up the hill to the prestigious Capital Hill Club was delayed only briefly as a motorcade, accompanied by an impressive entourage of security agents and vehicles, hustled Vice President Cheney into the Capital Hill Club for his luncheon speech. This is, unfortunately, a somewhat common occurrence these days in security conscious Washington as political types and diplomats make their way around the city.

Our keynote speaker at lunch was Representative Kenny Hulshof (R-MO), a member of the House Ways & Means Sub-Committee on Health. Rep. Hulshof gave a spirited presentation on healthcare issues mixed with some inside-the-beltway humor.

At the conclusion of lunch, our Illinois contingent made it’s way up to “The Hill” for scheduled meetings at the offices of Senator Durbin and



Shawn Maree Bishop
Staffer to Max Baucus, D-MT
Senate Finance Committee



Margaret White
& Liz Baptist



Capitol Building



2007 Legislation Day in Washington

Senator Obama. Paul Miller’s advice in our “training session” was right on: “Don’t expect a lot of time to speak and make your points and *do* expect to meet with a staffer, often a very young staffer.” Very young and very intelligent staffers *do* run the offices of our elected representatives.



Representative
Kenny Hulshof, MO.

After a long walk up the Hill past the Supreme Court, the Capitol and the Library of Congress we made our way to the Senate Office Building. We met with a senior staffer in Senator Richard Durbin’s office who gave us a good deal of time to present our positions and a request that Senator Durbin endorse and send our letter of concern over the NPI issue to Secretary Michael Leavitt at HHS.

Our meeting at Senator Barack Obama’s office was equally as successful as his staffer for health care issues gave us an uncommon amount of time to discuss the NPI and its effect on the billing and cash flow of our hospitals. We had hoped to see Senator Obama during our visit but a quorum call came from the Senate floor and he was on the move again.

As you know, CMS has issued a contingency plan with regard to the implementation of the National Provider Identifier system and I, for one, believe that the grassroots efforts by over 100 AAHAM members and visits to our representatives during Legislative Day, made the difference.

Our Nation’s Capital should be a “must see” on everyone’s list. I plan to make Legislative Day 2008 a “must do”.

Bill Carlson
Illinois AAHAM



The gang from Illinois
Liz Baptist, John
Currier, Dick Wyrwal,
Bill Carlson, Judi
Llnes and Margaret
White.



Jefferson Memorial



Dr. Admiral Agwunobi
Asst Secretary for Health-Dept of HHS



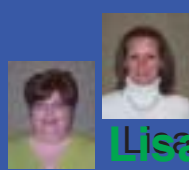
Tanya Twist
and
Paul Miller





Let us help you get certified!

CERTIFICATION CORNER



Judi

Lisa

**CPAT
CCAT
CCAM
CPAM**

National AAHAM has been working diligently to provide the professional exam online as soon as this fall!

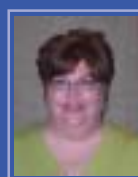
2007 Certification Schedule

| | |
|------------------|---|
| June 1 | Registration deadline for August CPAT / CCAT / CCT exams |
| August 1 | Registration deadline for October 6th CPAM / CCAM exams |
| August 13 -25 | CPAT / CCAT / CCT exams |
| September 1 | Registration deadline for November CPAT/CCAT/CCT exams |
| October 6 | CPAM / CCAM exams |
| November 12-28 | CPAT / CCAT / CCT exams (no exams over Thanksgiving weekend) |
| December 1, 2007 | Registration dealine for February 2008 CPAT/CCAT/CCT exams |

Certification Committee



Judi Lines, CPAM
jlines@kishhospital.org
(815) 756-1521
Ext. 3612.



Lisa Kronenberger
lisa_kronenberger@gibsonhospital.org
(217) 784-2613

LOG POST-IT NETWORK

Don't miss this:
Two former members of IL
AAHAM scheduled to
present in 2007.

Dan Hobbs, Peoria in
September

Bryon Pickard,
Bloomington in December

Illinois AAHAM
Website
Check it OUT!

www.illinoisaaaham.com

National AAHAM
Election coming
up.

Be sure to
VOTE!!

Get your
foursomes together
for the
Chuck Garvin
Memorial Golf Day
June
21 at the "Den" in
Bloomington.

Illinois AAHAM
Board of Directors &
Officer's Elections are
this year.

Interested in running?
Get nominated or
nominate someone?

Calling all presenters!!

We need Chapter Excellence points!
If you have made a presentation to an
organization other than IL AAHAM during
the time period of July'06 – June'07,
please forward a copy of the agenda (with
a bio indicating you are a member of IL
AAHAM) with your name, topic and
number of attendees to Doris Dickey
or Cheri Lockhart for Chapter Excellence
points.

ddickey@rcha.ent or
clockhart@essex1.com



2006 / 2007 MEETING SCHEDULE & SITES

RESERVE THESE DATES FOR IL AAHAM

June 21-22

Charles Garvin Golf Outing, The Den, Bloomington



Summer Meeting, The Chateau, Bloomington

September 14

Fall Meeting, The Par-A-Dice, East Peoria

September 26-28

ANI, Marriott Harbor Beach Resort, Ft. Lauderdale

December 5-7

Winter Meeting, ASI, The Chateau, Bloomington

For more information contact: ILLINOIS CHAPTER - AAHAM

Bill Carlson 563-242-2586 or 319-230-4488

wc@abacollect.com





Thank You again to our Platinum Corporate Sponsors.

2006/2007 - Platinum

2006/2007 - Platinum



Jerry Westfall
217-528-8090



jwestfall@accordisinc.com

Allied Business Accounts



William Carlson
Betty Burch

800-533-0216

wc@abacollect.com

bburch@abacollect.com



AHC

Healthcare Receivables Management

Bruce Tichenor
Bonnie Holland

800-950-2270

btichenor@ahcinc.com



Eric Ludtke

800-267-2780

eric@trackerscorp.com



Rockford Mercantile



Dick Brown

rlb@rmacollections.com

H & R Accounts, Inc.
MEDPAY
Management Systems



Ron Snyder

800-383-6110

rsnyder@hraccounts.com



2006 - 2007 Illinois AAHAM Officers and Directors

2006 - 2007 AAHAM Officers and Directors



Chairman of the Board
 Veronica Modricker
 Regional Manager for Development
 Medical Reimbursements of America
 416 7th Avenue West
 Andulusia, IL 61232
 Tele: 309.798.2694
 Cell: 309.912.0480
 modrickero@MedicalReimbursements.com



President
 John D. Currier
 PFS Director
 IL Valley Community Hospital
 925 West Street
 Peru, IL 61354
 Tele: 815-780-3722
 Cell: 815-243-2606
 John.Currier@ivch.org



First Vice-President
 Bill Carlson
 Director of Marketing
 Health Care Billing Services, Inc.
 PO Box 1600
 Clinton, IA 52732
 Tele: 563.242.2586
 Cell: 319.230.4488
 wc@abacollect.com



Second Vice-President
 Cheri Lockhart
 Accordis
 PO Box 1235
 Sterling, IL
 Tele: 815.535.8117
 Cell: 815-535.8117
 clockhart@essex1.com
 ddickey@rcha.net



Treasurer
 Richard M. Wytrowski, CCAM
 Allied Business Accounts, Inc.
 Vice President
 PO Box 1600
 Clinton, IA 52732
 Tele: 563.242.2056
 Cell: 563.249.2180
 rmw@abacollect.com



Secretary
 Doris Dickey
 Business Services Manager
 Rochelle Community Hospital
 900 North 2nd Street
 Rochelle, IL 61068
 Tele: 815-561-1620
 Cell: 815-751-7776
 ddickey@rcha.net



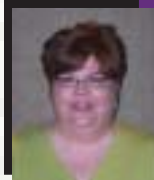
John Rademacher
 Knepper & Kibby
 312-829-8848
 Cell: 312-331-0104
 jrademacher@knepperkibby.com



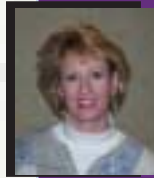
Ron Snyder
 H & R Accounts, Inc.
 800-383-6110 x-2030
 Cell: 563-349-0710
 rsnyder@hraccounts.com



Diana L. DeMarlie
 Perot Systems
 309-441-6660
 Cell: 309-945-6515
 Diana.DeMarlie@ps.net



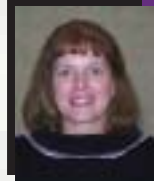
Lisa Kronenberger
 Gibson Area Hospital & Health Services
 217-784-2613
 Cell: 217-781-0139
 lisa_kronenberger@gibsonhospital.org



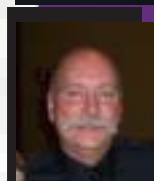
Nancy Vollmer
 Eagle Recovery
 309-272-4501
 Cell: 309-258-2424
 nvollmer@eaglerecovery.net



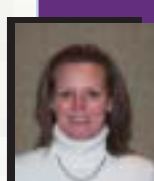
John McGlasson
 Pro-Com Services of Illinois, Inc.
 888-633-8238 x-4014
 Cell: 815-260-5238
 jmx2@frontiernet.net



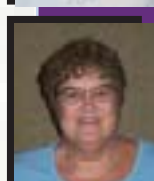
Chris Bryant
 Dr. John Warner Hospital
 217-935-9571 x-3211
 Cell: 217-433-9248
 chris.bryant@djwhospital.org



Trace Manning
 St. John's Hospital - Physician Billing
 217-544-6464 x-45204
 Cell: 217-343-3304
 trace.manning@st-johns.org



Judi Lines
 KishHealth System
 815-756-1521 x-3612
 Cell: 815-871-0976
 jlines@kishhospital.org



Linda McGlauchen
 Shelby Memorial Hospital
 217-774-3961 x-2651
 lmcglauchen@shelbymemorialhospital.org



Application for National Membership

AAHAM Membership • 11240 Waples Mill Road • Suite 200 • Fairfax, VA 22030
Phone: (703) 281-4043 Fax: (703) 359-7562 http://www.aaham.org

| | | |
|---|--|---|
| Name | Day Phone () () | Fax Number () () |
| Mailing Address | <input type="checkbox"/> Home | <input type="checkbox"/> Check if this is the billing address |
| City | <input type="checkbox"/> Business | of the credit card you will use below. |
| Employer Name | State | Zip |
| Local Chapter Name | Your Title | Date |
| If Sponsored by AAHAM Member, Give Name | E-Mail Address | |
| Home Address (if not listed above) | <input type="checkbox"/> Check if this is the billing address of the credit card | you will use below. |
| City | State | Zip |

| | | | |
|-------------------|---|---|-----------------|
| National Dues \$ | For Credit Card Payments: <input type="checkbox"/> AMEX <input type="checkbox"/> VISA <input type="checkbox"/> MASTERCARD | Name as it appears on card | Expiration Date |
| Local Dues \$ | | Account Number | Signature |
| Total Enclosed \$ | | Billing Address, if Different From Above (please include Street Address, City, State and Zip) | |

Please Circle the Appropriate Codes in Each Category Below.

| | | | | |
|---|---|--|--|---|
| 1 Years in Healthcare 1 0 – 2 years 2 3 – 5 years 3 6 – 10 years 4 11 – 15 years 5 16 – 20 years 6 21 – 30 years 7 31 – 40 years 8 41+ years | 3 Employer Type 1 Accounting 2 Ambulatory Care/Clinic 3 Computer Hardware/Software 4 Consulting 5 Credit/Collection 6 Library/Education 7 Government 8 Health Plan/Insurance 9 Home Health 10 Hospital/Medical Center 11 Healthcare System/Multi Facility 12 Law Firm 13 Long Term Care/Post Acute 14 Managed Care 15 Physician Group Practice 16 Physician Practice Management 17 Specialty Practice Group | 18 Sub Acute Care 19 Shared Service Organization 20 Coordinated Business Organization 21 Other Medical Facility/Org. Association 22 Professional/Trade Association 23 Student 24 Retired 25 Non-Working 26 Media 27 Hospice 28 All Other (not listed above) | 7 Vice President 8 Assistant of Associate VP or Administrator 9 Director 10 Manager 11 Supervisor 12 Staff 13 Technician 14 Clinical 15 Academic 16 All Other (not listed above) | 8 Business Development/Sales 9 Compliance 10 Collections 11 Finance 12 Information Services/Technology 13 Managed Care 14 Marketing 15 Materials Management 16 Medical Records 17 Medicare/Medicaid 18 Operations 19 Patient Financial Services 20 Provider Services/Relations 21 Reimbursement 22 Third Party Administration 23 Utilization Review 24 Underwriting 25 All Other (not listed above) |
| 2 Certification 1 CPAT 2 CCAT 3 CHAM (NAHAM) 4 CHFP (HFMA) 5 FHFMA (HFMA) 6 CHCS (ACA) 7 CPA 8 Other | 4 Position 1 President/Administrator 2 Partner/Principal/Owner 3 CEO/Exec Dir/Exec VP 4 COO 5 CFO/Controller 6 CIO | 5 Responsibility 1 Accounting 2 Administration 3 Admitting/Access 4 Audit 5 Benefits 6 Billing 7 Budget | | |

DO NOT use this form for renewing your membership or making an address change.

Membership is on an individual — not institutional — basis and is non-transferable.

Local dues vary by chapter. National dues are prorated according to date of application.

For dues amounts and your chapter assignment, please call AAHAM's National Office at (703) 281-4043 M–F, 9 am – 5 pm, Eastern time.

National Dues are \$150 for the year. Prorated dues amount for July 1 to September 30: \$115 For October 1 to December 31: \$185 (15 months of membership)

Please allow 2 – 4 weeks for processing once your application is received at the AAHAM National Office.

Dues are not tax-deductible as a charitable contribution, but may be deductible as a business expense.

Send application with your payment to:

**AAHAM Membership
11240 Waples Mill Road
Suite 200
Fairfax, VA 22030**

*Make checks payable to AAHAM
Tax ID# 23-1899873*