

The Lincoln Log

American Association of Healthcare Administrative Management Illinois Newsletter



Providing the Educational and Career Development Needs
of Healthcare Professionals in the State of Illinois.

www.IllinoisAAHAM.com

Autumn 2013

1st Place Winner!!
For Excellence in Journalism and Graphic Design,
Winner of the 2012-2013 National AAHAM Journal Award!!





*The IL AAHAM Board would like to thank you
for your membership, participation and
support!*

*Bill, Kenny, Chris, Rena, Nancy, Kathy, John, Doris,
Al, Maria, Julie, Tera, Josh, Bob and Donna!*



Inside this edition...

President's Message

Save the Date—2013 Annual State Institute

NEW Certification Announcement!!

Awards

ANI Highlights

Newly Certified Members

AAHAM's Ask and Answer

Jodie Edmonds, HFS Bulletin

Fall Meeting Highlights

2013 Calendar of IL AAHAM Events

IL AAHAM Leadership

IL AAHAM Corporate Partners



Julie VanPelt, CHFP, CPC, CRCS, I, P

*IL AAHAM
Lincoln Log
Co-Editors*



Joshua Johnson, CRCS, I, P

The LINCOLN LOG magazine is published four times annually by the AAHAM ILLINOIS CHAPTER to update the membership regarding chapter and national activities as well as to provide information useful to health care administrative professionals. Opinions expressed in articles or features are those of the author(s) and do not necessarily reflect the views of the Illinois Chapter, AAHAM, the NATIONAL AAHAM organization or the editor. Reproduction and/or use of the format or content of this publication without the expressed permission of the author(s) or the editor is prohibited. © Copyright 2007.



PRESIDENT'S



*Kenny Koerner, CRCE
IL Chapter President*

Message

The AAHAM ANI was just last month in New Orleans. The Annual National Institute is always a time to catch up with AAHAM friendships that have been made across the nation. It is also a venue that I use to recharge my batteries while learning through the great educational sessions more about how to tackle the numerous professional challenges that we each face back in our respective places of work. The ANI did not disappoint and for those of us lucky enough to attend, it was filled with numerous learning opportunities that still allowed for networking dinners and the occasional slice of fun mixed in. I am so proud to be a member and current president of your Illinois chapter! The amount of time and effort put forth by our board this past year was rewarded at the annual awards banquet with your Illinois chapter taking home first place in Chapter Excellence!!! The Chapter Excellence Award is designed to recognize and reward local AAHAM chapters for excellence in pursuing the goals of the AAHAM. For the purpose of this award program, excellence is defined as outstanding, innovative and balanced performance in programs and activities in support of AAHAM's mission, education programs, professional development and membership development. The award is a recognition of everyone in the Illinois chapter that has volunteered their time and talents throughout this past year. It is also a reflection on the dedication that our chapter excellence committee has to putting together the long and tedious application and data compilation for this award. My hat goes off to the work that Doris Dickey, Rena Willey and their committee for the many hours of nights and weekends spent working on this.

I'd also like to take this opportunity with the last Lincoln Log of 2013 to recognize your current Illinois Board of Directors and the contribution they have made to our great chapter this past 2 years. Most of what is done by your board of directors happens without fanfare and is done with the sole purpose of enhancing your Illinois AAHAM membership. The chapter is strong because of these people, and because of the people before them. Let us not forget the dedication and volunteerism that these folks have shown to make your chapter relevant to you in your daily professional and personal life.

I'd like to say thank you to the following board members that served in 2012-2013:

Bill Carlson, Chris Bryant, Rena Willey, Nancy Vollmer, Kathy Uphoff, John McGlasson, Doris Dickey, Al Staidl, Maria Orwig, Julie Van Pelt, Tera Roesch, Josh Johnson, Bob Kemp and Donna Stortzum.

Special thank you also goes out to my mentor and current National AAHAM 2nd Vice-President and National AAHAM 1st Vice-President elect, John Currier. John has pushed me throughout the years to become more active in Illinois AAHAM and I'd like to thank him for his initial push and his continued guidance. He's always been there for anything I've needed, and for that I say thank you..

Thanks again to each of these people as they made my first 2 years as Illinois president a pleasure. See you all at our Annual State Institute on December 5th and 6th at the Embassy Suites in East Peoria!!

Kenny





**ILLINOIS
AAHAM**

Join Us...
Annual State Institute

December 4th-6th, 2013

Embassy Suites

100 Conference Center Dr.

New Location!! **East Peoria, IL 61611**

309-694-0200/800-362-2779

Rooms Blocked until November 13, 2013

(Room Rate \$119.00 + tax) (Group: American Association of Healthcare Administration Management)

\$100.00 AAHAM Members

\$125.00 Non-Members

New Low Price!

AWESOME Speaker Line-up!

Weston Smith (AAHAM ANI Keynote Speaker)

Shay Eskew, VP Client Services, EnableComp

Arnetta Smith, VA Illiana Health Care Systems

Tim Moore, VP Business Development, Marcam Associates

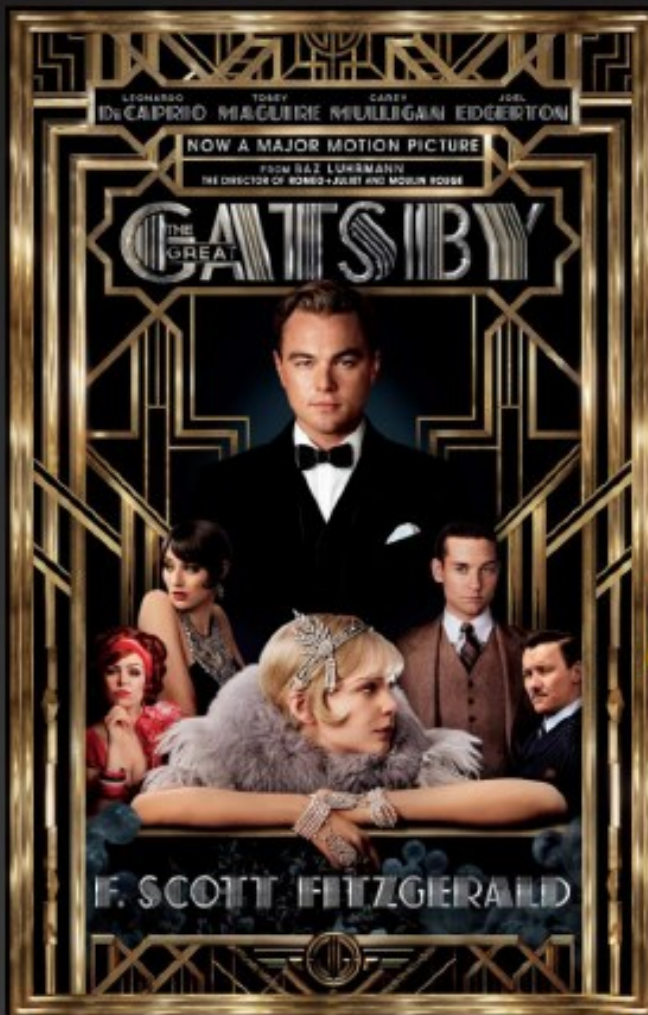
John D. Currier, CPAM, CCT (National AAHAM 2nd VP)

Paul Miller, Chairman & CEO, Miller/Wenhold Capitol Strategies, LLC

Sandra Kraiss, Asst. VP Health Delivery & Payment Systems, IHA

Great Gatsby

Themed Banquet –Thursday December 5



**Dinner!
Dancing!
Fun!**

**West MacQueen
Street Band!**



5-6pm President's Reception

6-7pm Dinner

7-8pm Awards

8-11:30pm-FUN FUN FUN!!!!

Free Gift!

Come dressed in the Gatsby Era Style!



Illinois Chapter

ANNUAL STATE INSTITUTE

When: December 4th – December 6th, 2013

Where: Embassy Suites
100 Conference Center Drive
East Peoria, Illinois 61611

Hotel Phone # Local: 309-694-0200
Toll Free: 800-362-2779

Meeting Cost \$100.00 (*AAHAM members*)
\$125.00 (*non-members*)

Rooms blocked until: November 13, 2013

Room Cost \$119.00 + tax (single or double)
(Group Name: American Association of Healthcare
Administrative Management)

Meeting attire: Business casual

Banquet theme The Great Gatsby

Click to register on-line at www.illinoisaaaham.com





Illinois Chapter

MEETING AGENDA

Wednesday, December 4, 2013

- 6:00 - 9:00 p.m. Board Meeting
- 8:00 - 11:00 p.m. Exhibit hall set-up & vendor fair hospitality

Thursday, December 5, 2013

- 7:30 - 8:30 a.m. Registration & continental breakfast
- 8:30 - 9:00 a.m. General membership meeting – President announcements
- 9:00 - 10:30 a.m. “The Line” Ethics, Compliance, Financial Integrity
Weston Smith President, ChalkLine Solutions, Inc.
- 10:30 - 10:45 a.m. **Break** (*Please visit the Vendor Fair*)
- 10:45 - 12:00 p.m. “Anything is Possible: Overcoming Obstacles”
Shay Eskew Vice President of Client Services, EnableComp
- 12:00 - 1:00 p.m. **Lunch**
- 1:00 - 2:00 p.m. “Dealing with VA Claims” Veterans Administration--
Arnetta Smith, Chief of Medical Administration Services
- 2:00 - 2:30 p.m. **Break** (*Please visit the Vendor Fair*)
- 2:30 - 3:00 p.m. “Calling patient cell phones – Is your facility at risk?”
Tim Moore, VP of Business Development, Marcam Assoc.
- 3:00 - 4:30 p.m. “SURVIVAL”-Team Building/Problem Solving
John Currier, CPAM, CCT, Exec Dir of Rev Cycle Mgmt
- 4:30 p.m. **Adjourn**



Illinois Chapter

Thursday Evening Banquet

- 5:00 - 6:00 p.m. President's Reception
- 6:00 - 7:00 p.m. Dinner
- 7:00 - 8:00 p.m. Awards
- 8:00 - 11:30 p.m. West MacQueen Street Band

Guest dinner's available upon request: \$50.00 per person

Friday, December 6, 2013

- 8:00 - 9:00 a.m. **Breakfast Buffet**
- 9:00 - 10:30 a.m. "Washington Updates"
Paul Miller, Chairman/CEO
Wenhold Capitol Strategies, LLC
- 10:30 - 10:45 a.m. **Break**
- 10:45 - 12:00 p.m. "Illinois Hospital Association Updates"
Sandy Kraiss, Assistance Vice President, Health Delivery
and Payment Systems, Illinois Hospital Association



FOR IMMEDIATE RELEASE
2013

October 16,

The American Association of Healthcare Administrative Management (AAHAM) announces Name Changes to World Famous Certifications

Fairfax, VA - The American Association of Healthcare Administrative Management (AAHAM) announced at their annual conference, the renaming of their renowned certifications. These new names are designed to more accurately reflect current job and industry titles and reinforce the association's growth and continued focus on healthcare revenue cycle professionals.

"By updating the titles, AAHAM designations now accurately reflect the scope of knowledge and skills required to secure these prestigious certifications" said AAHAM President, Christine Stottlemeyer, CRCE-I.

A focused branding campaign kicked off at the conference to provide information and dissemination of the new names. The new branding program will unify the AAHAM certification brand across all products and platforms to reinforce their presence in the healthcare community.

The new names are:

Certified Revenue Cycle Executive-Institutional (CRCE-I) formerly known as the Certified Patient Account Manager (CPAM)
Certified Revenue Cycle Executive-Professional (CRCE-P) formerly known as the Certified Clinic Account Manager (CCAM)
Certified Revenue Cycle Specialist-Institutional (CRCS-I) formerly known as the Certified Patient Account Technician (CPAT)
Certified Revenue Cycle Specialist-Professional (CRCS-P) formerly known as the Certified Clinic Account Technician (CCAT)

A new mid-level certification was also announced, the CRCP, Certified Revenue Cycle Professional. This new exam is designed for mid-level managers and tests the participant's knowledge of the revenue cycle. With the addition of this new certification, AAHAM now offers a complete career ladder, beginning with the CRCS and culminating with the CRCE.

For more information regarding AAHAM and its programs, please visit www.aaham.org or contact AAHAM, 703.281.4043.

ABOUT AAHAM

The American Association of Healthcare Administrative Management (AAHAM) is a national professional association of thirty-two chapters and over 3000 healthcare patient financial services professionals from hospitals, clinics, billing offices, allied vendors, physicians and multi physician groups. AAHAM members direct the activities of the thousands of people who are employed in the healthcare industry.

AAHAM is the preeminent professional organization for revenue cycle professionals and is known for its prestigious certification and educational programs; professional development of its members is one of the primary goals of the association. AAHAM is also recognized for its quarterly journal, The Journal of Healthcare Administrative Management and its Annual National Institute, held each fall. AAHAM actively represents the interests of its members through a comprehensive program of legislative and regulatory monitoring and participation in industry groups such as WEDI, ASC X12, NUBC and NUCC.

SUCCESS

CERCE

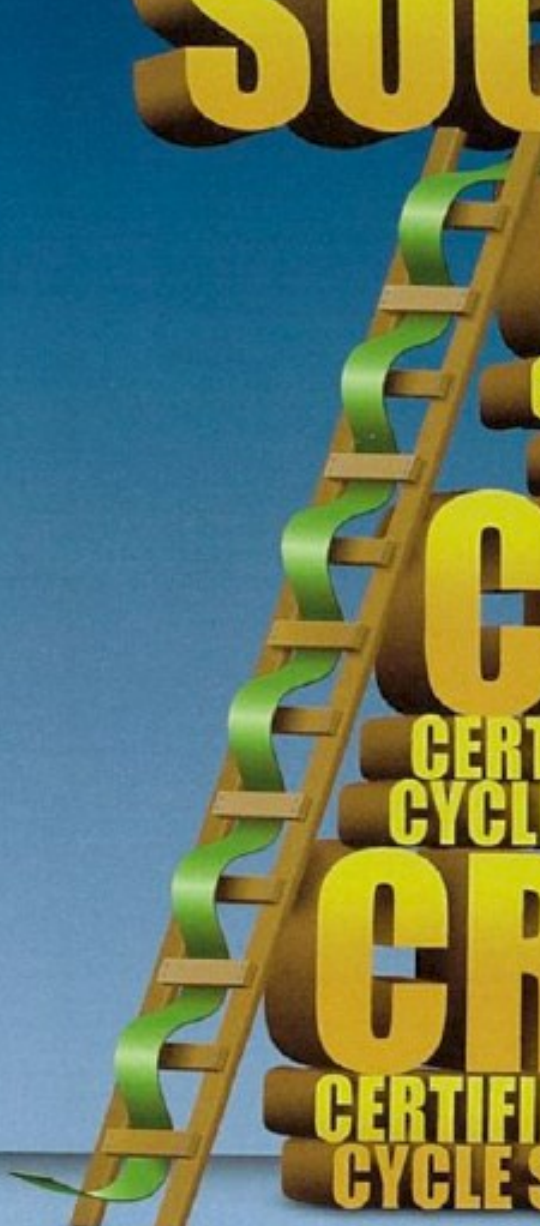
**CERTIFIED REVENUE
CYCLE EXECUTIVE**

CRCP

**CERTIFIED REVENUE
CYCLE PROFESSIONAL**

CRES

**CERTIFIED REVENUE
CYCLE SPECIALIST**



AAHAM

American Association of Healthcare
Administrative Management

AAHAM's Certifications are your ladder to success!



ILLINOIS
AAHAM



CRCP -FREE Webinar!



FREE AAHAM CERTIFICATION WEBINARS

**WEDNESDAY, November 13, December 11 or
January 8**

12:00pm - 12:30 PM EDT

EVERYONE Earns 1 AAHAM CEU for attending

Join AAHAM President Elect, Victoria DiTomaso, CRCE-I and AAHAM Second Vice President, John Currier, CRCE-I as we present an overview of our new certification, the CRCP

“CRCP, The Certified Revenue Cycle Professional”

Space is limited, register today!

Join us to learn all about the newest AAHAM certification, the Certified Revenue Cycle Professional (CRCP). Find out about who should take this exam, the format, costs and what it means to your career development. There will also time to answer your questions!

We are offering this FREE webinar on three different dates to make it accessible to all of you! Choose November 13, December 11 or January 8.

These complimentary 30 minute webinars include a presentation and Q&A period. To make sure we have space for you, registrations must be received two weeks prior to the webinar. You will receive your confirmation and call in number via email one week before the webinar you select. Choose either November 13, December 11 or January 8.

The audio conference format permits an unlimited amount of people to listen in from one phone. Everyone that attends earns 1 CEU for attending, so feel free to gather up your whole team! Correspondence will only be sent to the registrant. The member name and number must match the email address.



ILLINOIS
AAHAM



CRCP -FREE Webinar!

You will receive a CEU sign up form for your entire group of listeners with your confirmation. To ensure the quality of interaction, the number of registrations for each webinar is limited. Reserve your space by registering ASAP.

To register...

Email, fax or mail the registration form along with your payment to:

AAHAM Audio Conference
11240 Waples Mill Road
Suite 200
Fairfax VA 22030
Fax: 703.359.7562
Email: moayad@aaham.org

Registrations must be received two weeks prior to the webinar. You will receive your confirmation and call in number via email one week before the webinar you select. Choose November 13, December 11 or January 8. We are unable to accept registrations after that date. Correspondence and handouts will only be sent to the registrant. The member name and number must match the email address.

After registering...Approximately one week prior to the call, you will be emailed a confirmation, phone number and passcode to use for the call and a CEU form. On the program date...It's easy! Just call in at the scheduled time and enter your passcode.

AAHAM...Providing Excellence in the Business of Healthcare
Certification•Compliance •Leadership Development•Networking•Advocacy

Go to
www.aaham.org
and register today!





LockBox

EOB to ERA



Simplify.

LockBox is a secure feature that allows users to autopost 100% of their EOB's & have access to funds the same day they are deposited

How does it work? Mail is received, opened, and sorted at the LockBox operations center. Collected funds are transferred to your bank account the same day. EOB's and other correspondence from the payer are scanned, imaged, and indexed and all EOB images are converted to ERA's. You now have an electronic copy (ERA) for 100% of your EOBs to use for autoposting.

Call for a free demo today at 605-323-0800

Find more simply effective solutions at www.eProviderSolutions.com





ANI 2013

**IL AAHAM Chapter
Honored with the
1st Place Award
for Chapter
Excellence!**

**Presented at ANI
2013**

New Orleans

Oct. 17, 2013



Mardi Gras Style...

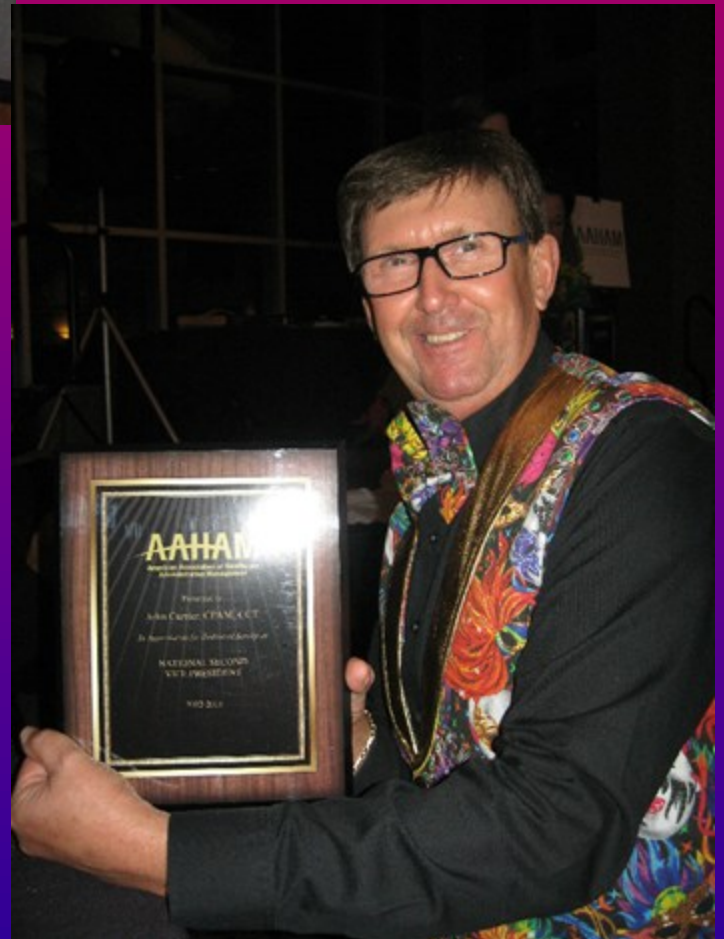


ANI 2013

**IL AAHAM's LINCOLN
LOG—
1st Place Winner!!
National AAHAM Journal
Award!!
For Excellence in
Journalism and
Graphic Design**



**John Currier, CRCE
National 2nd Vice
President.**



ANI 2013





ANI 2013



When patient accounts are past due, we're here to help.

We reduce days outstanding, lower the cost per account, and improve cash flow. Plus, we recognize the value of urgency to recover past-due account balances quickly, collect with care, and protect your brand equity.

Receivables management solutions



Past due collections

Increase net recovery while protecting your brand.



Revenue cycle management

Reduce costs and increase performance of ARM placements.



ICD-10 medical coding

Reduce risk, and increase performance of medical procedures coding and billing processes.



Smart Solutions. Beyond Expectations.

Acquisition & Enrollment | Care & Loyalty | Up-sell & Cross-sell | Receivables & Subrogation
800-767-2364 | afni.com | afnicareers.com | solutions@afni.com



MEDICAL
REIMBURSEMENTS
of AMERICA, INC.

VERONICA MODRICKER, CHFP
REGIONAL VP OF SALES

7105 MOORES LANE
BRENTWOOD, TN 37027
CELL 309/912-0480
EMAIL: vmodricker@MRAresults.com
www.MRAresults.com

HORIZON
FINANCIAL MANAGEMENT

2800 Maple Avenue, #33B
Downers Grove, IL 60515
☎ 630.724.1197
📞 630.244.6289
✉ maris65@sbcglobal.net

AL STAIDL

REVENUE ENHANCEMENT SOLUTIONS FOR HEALTHCARE PROVIDERS





NEBO SYSTEMS
PASSPORT HEALTH COMMUNICATIONS INC.

Presents...

PASSPORT eCare™ NEXT

Payment Certainty for Every Patient™

Passport goes beyond connectivity, utilizing proprietary technology and business intelligence to **turn raw data into actionable information.**

The **automated, error-free workflow** created by Passport eCare™ NEXT allows you to manage all the financial components of every patient encounter and ensure *Payment Certainty for Every Patient™*.

Wherever where your patient encounter occurs, **Passport eCare™ NEXT integrated solution suites have you covered.**

**Orders > Scheduling > Patient Access > Best Payment > Claims
Patient Engagement > Population Health Management**

- » One solution for your patient access and payment certainty needs
- » Integrated with your systems and workflow
- » Top-ranked customer support

Visit **www.passporthealth.com**
or call **630-916-8818**



NEWLY CERTIFIED TECHNICAL MEMBERS

CRCS-I AND CRCS-P

Congratulations!

First Name	Last Name	Certification	Facility
Jody	Brown	CRCS-I	Avadyne Health
Rebecca	Catour	CRCS-P	Avadyne Health
Jessica	Hutchison	CRCS-P	Avadyne Health
Karen	Cummings	CRCS-I	CGH Medical Center
Toni	Day	CRCS-P	Gibson Area Hospital
Jacqueline	Rusk	CRCS-P	Gibson Area Hospital
Lourie	Johnson	CRCS-I	Hills and Dales General Hospital
Kayla	Lasceski	CRCS-I	Hills and Dales General Hospital
Ashley	Schriber	CRCS-I	Hills and Dales General Hospital
Stacy	Guinn	CRCS-I	MBR
Tina	Pray	CRCS-I	Medical Business Resources
Eric	Johnson	CRCS-I	MedPay
Shari	Loyd	CRCS-P	Mercy Health System
Paula	Leal-Rodriguez	CRCS-P	Spectrum Health
Diane	Lunsted	CRCS-P	Spectrum Health Hospital
Greta	Strandberg	CRCS-I	Spectrum Health Medical Group



NEWLY CERTIFIED

PROFESSIONAL MEMBERS CRCE

Congratulations!



Dawn Clark, CRCE



Kim Velazquez, CRCE

Exceeding the Needs of the People We Serve

Berlin-Wheeler

Receivables Management

Since 1970

1-800-366-2373



Since 1970 Berlin-Wheeler has been building rock solid client relationships based upon mutual trust, respect, experience, and performance.

Call us today to begin experiencing the service that you deserve.

At Berlin-Wheeler there really is a difference - our healthcare clients will tell you.

Call Shirley Mason @ 314-435-3377



Visit us on
Facebook

Search for:

Illinois American Association of Healthcare Ad-
ministrative Management



Tweet with us:

@AAHAMIL



Find us on LinkedIn: Search for
AAHAM Illinois Chapter



WELCOME TO
ILLINOIS
AAHAM
American Association of Healthcare
Administrative Management
THE LAND OF LINCOLN

Providing the Educational and Career Development Needs
of Healthcare Professionals in the State of Illinois.

www.IllinoisAAHAM.com

Click here to watch the "amateur" IL AAHAM Membership
video! [IL AAHAM MEMBERSHIP VIDEO](#)



ERA
EAGLE RECOVERY
ASSOCIATES, INC.

NANCY VOLLMER
VP Sales & Marketing

424 SW Washington St.-3rd Floor
Peoria, Illinois 61602
P: 309.272.4501
T: 800.906.3210
F: 309.272.1400
C: 309.258.2424
nvollmer@eaglerecovery.net



WELCOME TO
ILLINOIS
AAHAM
THE LAND OF LINCOLN

Home Leadership Events Newsletter Photo Gallery Our Partners Q & A Forms

Providing the educational and career development needs of
healthcare professionals in the State of Illinois.

Visit our Website at www.illinoisaaaham.com



ILLINOIS
AAHAM

Your Trusted Partner In Performance

Founded in 1896, family owned & operated, our long term success offers health care professionals service, security, reliability & performance virtually unmatched in the industry.

We provide customized solutions:

Extended Business Office

- Self-Pay First-Party Letters & Phone Campaigns
- Accelerates Cash-Flow
- Prevents Accounts From Becoming Past Due
- Patient Sensitive

Pre-Collection

- Third-Party Impact at a Low Fixed Price
- Diplomatic
- Accelerates Cash-Flow

Full Collection

- We get paid only if we collect
- Diplomatic, Professional Approach
- "Sometimes firm but always fair"
- Self Pay, Insurance Re-Billing
- Payment Arrangements
- Workers Comp / Liability Cases
- Skip Tracing, Skip Tracing, Skip Tracing
- Credit Reporting

**Please contact Heather Turcany
today to discuss your collection needs
815.405.2191 / hturcany@collectmcg.com**

ESTABLISHED 1896 | www.merchantscreditguide.com

Merchants' Credit Guide Co.



ILLINOIS
AAHAM

ASK Illinois AAHAM?????



ASK:

Dear Illinois AAHAM,

Where do I find information about the most recent Hospital Financial Assistance Program/ IL Charity Care policy changes that are effective January 1, 2014?

ANSWER:



The final rule was released in August of 2013. The hospital financial assistance application requirements (Section 4500.30) and the presumptive eligibility criteria (Section 4500.40) are to be implemented no later than January 1, 2014. The final ruling has very specific wording that should be reviewed and compared to your current policies.

The ruling also has guidelines on presumptive eligibility for Illinois hospital as well as specifics for all hospital, urban hospitals and critical access hospitals.

If you are an IL hospital provider and a member of IHA, you may also contact IHA for additional information.

Heading of the Part: Hospital Financial Assistance under the Fair Patient Billing Act

Code Citation: 77 Ill. Adm. Code 4500

<u>Section Numbers:</u>	<u>Adopted Action:</u>
4500.10	New Section
4500.20	New Section
4500.30	New Section
4500.40	New Section
4500.50	New Section
4500.60	New Section
4500.APPENDIX A	New Section

Statutory Authority: Implementing and authorized by Section 27 of the Fair Patient Billing Act [210 ILCS 88/27]



Have a question that you think IL AAHAM might be able to answer?? Please go to our website at www.illinoisaaaham.org, click on the Q&A tab, and ask away!





Illinois Healthcare & Family Services (HFS) Bulletin

Jodie Edmonds, Vice President, Medicaid Revenue Consultant
November 1, 2013

Enhanced Hospital Assessment Payments

The Department of Healthcare and Family Services (HFS) will begin payments to hospitals under the Enhanced Hospital Assessment, as approved by the Centers for Medicare and Medicaid Services (CMS). This initiative will generate an annual net benefit for Illinois hospitals of about \$190 million.

The approved Assessment program has an effective date of June 10, 2012, which requires the state to make retroactive payments back to that date. To accomplish this, the Department will process the retroactive payments in a series of three payouts, each covering multiple months. The Department will be transmitting annual hospital payment reports and tax remittance schedules in the coming days.

Reference the HFS October 23, 2013 notice
<http://www.hfs.illinois.gov/assets/102313n.pdf>

HFS Outstanding Issues

HFS still has not implemented the following:

- Renal Add-On Payments
 - The new segments have been added to the provider database but providers are not receiving the \$60.00 add-on payment yet.
 - The HFS programming/testing has not been completed.
- Hospital Acquired Conditions Adjustments
 - The HFS programming/testing has not been completed.
- Increased Co-Pay amount from \$3.65 to \$3.90
 - The HFS programming/testing has not been completed.
- Addition of CPT Code 90846 when billing for Hospital Outpatient Psychiatric Type A Services
 - The HFS programming/testing has not been completed.
 - C32 (Procedure Illogical for Category of Service) Rejections are occurring.

- Services on hold for CPT Codes 81200 – 81599
 - Hospital Fee-for-Service Billing
 - HFS is reviewing to determine the appropriate reimbursement for these services.

Hospital Outpatient Observation Services

As a result of the HFS system restraints that have existed for years, Nebo Systems/Passport Health has the capability of assisting hospitals with billing electronically for observation services that span more than two days.

Hospitals that are interested in this standardized programming edit, please contact your Account Manager for your facility.

Pay-to-Provider (Payee) NPI Reporting

With the implementation of the 5010 837I, HFS no longer requires that hospitals report the Pay-to-Provider Name, Address and NPI in the 837I format or in the UB-04 Paper Claim.

The Pay-to-Provider (Payee) reporting is only required when the address for payment is different than that of the Billing Provider. All enrolled Illinois Medicaid hospitals only have one payee on their provider file and that payee is themselves.

HFS 2360 Paper Claim Form – 2 Digit HIPAA Place of Service Codes

HFS does not require providers to report the 2 digit HIPAA Place of Service Codes when billing on the HFS 2360 Claim Form.

New and Revised CPT Codes for 2014 Speech-Language Pathology

The following are changes to CPT codes that are effective **January 1, 2014**. HFS has not yet determined how they will handle these code changes.

New Codes

- **92521** Evaluation of speech fluency (eg, stuttering, cluttering)
- **92522** Evaluation of speech sound production (eg, articulation, phonological process, apraxia, dysarthria);
- **92523** Evaluation of speech sound production (eg, articulation, phonological process, apraxia, dysarthria); with evaluation of language comprehension and expression (eg, receptive and expressive language)
- **92524** Behavioral and qualitative analysis of voice and resonance

Deleted Codes

- **92506** Evaluation of speech, language, voice, communication, and/or auditory processing
- CPT 92506 has been replaced with four new evaluation codes related to speech sound production, language, fluency, and voice and resonance. (See new codes above)

Ambulatory Procedures Listing Update

HFS recently posted updates to the APL. The update was mostly to change the age range of dental codes we have on the APL. Senate Bill 26 allowed more dental codes to be re-opened for adults.

Prompt Pay Interest Payments

HFS paid approximately \$165M in interest payments to the providers at the end of September.

These payments can be identified on the HFS Remittance Advices, "Prompt Pay Interest" or on the Comptroller's web site with "Object 1991." Object 1991 indicates Prompt Pay Interest.

Comptroller's Web Site www.ioc.state.il.us

- Under Financial Inquiries
- Vendor Payments
- Click on individual payment in question

Hospital Inpatient and Outpatient Reimbursement Systems

Final Rules must be published by November 30, 2013.

Effective with admissions on or after July 1, 2014, **inpatient claims** will be processed and adjudicated through the 3M All Payer Refined Diagnosis Related Group (APR-DRG) payment system.

One significant change is the inpatient reimbursement for transplants:

- Transplant Claims will be paid at 50% of total charges

Effective with dates of service on or after July 1, 2014, outpatient claims will be processed and adjudicated through the Enhanced Ambulatory Procedure Grouping (EAPG) payment system.

- Hospital fee-for-service billing and payment methodology will not be changed and will not be incorporated into the new EAPG payment system.
- Medicare Crossover claims will no longer be reimbursed based on departments visited.

2013 EHR Incentive Attestation

The revised implementation date for accepting 2013 Electronic Health Records Incentive attestations for eligible professionals and hospitals with HFS will be November 18, 2013.

Illinois Health Insurance Marketplace

Get Covered Illinois is the name of the Illinois Marketplace website www.GetCoveredIllinois.gov

If a client has Medicaid, they are already covered. They do not have to buy more health coverage.

- If a client is in an unmet spenddown status, this means their assets/income are too high for any Medicaid program, the Marketplace is where they should go.
- If the client is under 65, not on Medicare or SSI or in an LTC, they may be eligible for the Medicaid Expansion up to 138% FPL.
- If they are on Medicare and choose the Marketplace, they are not eligible for the subsidy.

The Affordable Care Act Medicaid Expansion

The Affordable Care Act expanded the number of people who qualify for Medicaid, an estimated 350,000 individuals the first year.

The law extends eligibility to all adults under the age of 65 whose modified adjusted gross incomes fall below just under \$16,000 for individuals and \$32,500 for a family of four.

Online Application Called Application for Benefits Eligibility (ABE)

Illinois Medicaid has a new web-based application system known as the Application for Benefits Eligibility (ABE). Through ABE, applicants or Assisters can apply online for Medicaid programs.

Currently, the new system does not have the capability of adding newborns to a case. The process is still in the development stage so providers need to continue with the current process for adding a newborn to a case.

Jodie Edmonds

Vice President, Medicaid Revenue Consultant

Nebo Systems/Passport Health Communications, Inc.



Our People



Our Services

Professional, Well Trained, Full-Time Dedicated **EMPLOYEES!**

On-Site • 7 days per week • Includes ED,
In-patient and Out-patient staffing •
Staggered Hours of Coverage



"The people at HFMI are professional and responsive to all of our needs; the on-site staff members are trained extremely well. We feel completely comfortable with them as an extension of our hospital system."

- Director of Patient Eligibility at
Cape Fear Valley Health Systems

Our Mission:

- Tailor a solution for your facility
- Assist with the management of your revenue cycle
- Ensure the highest probability of cash recovery
- Drive the reduction of bad debt



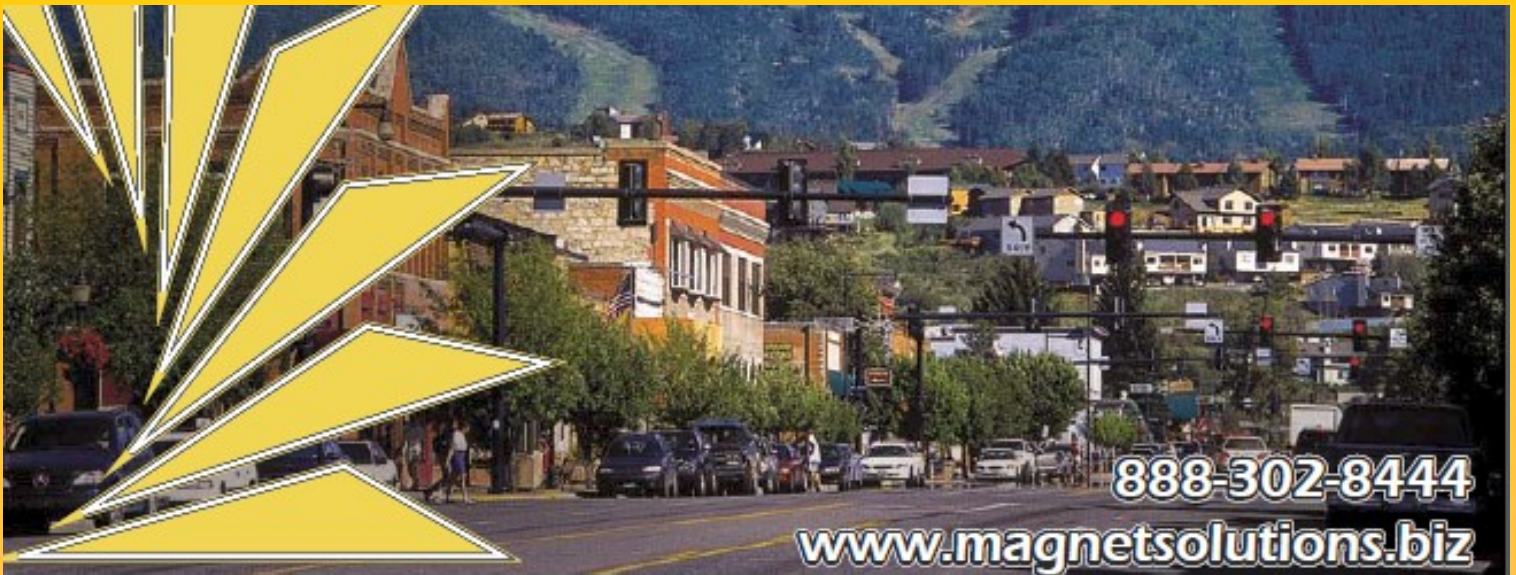
"Outdated collection techniques are eliminated. In-patient and out-patient financial representatives work closely with the patients to resolve account balances and reclaim lost revenue"

- Josie Burch, President of HFMI



Healthcare Fiscal Management Inc.
1202 Washington
Williamston, NC 27892
1-800-584-5545
www.hfmi.com





You've got a ***Community*** hospital to run

Is your self-pay AR becoming a resource drain?

Magnet Solutions Provides:

- ✓ Increased Cash and Cash-Flow
- ✓ Reduced Bad Debt Expense
- ✓ Increased Patient Satisfaction
- ✓ Optimized Communication Consistency

Additional Services:

Presumptive Charity Scoring
Cash Acceleration Program (CAP)



*“Let us
Represent
the Caring
Face of
Your
Community
Hospital*”

MAGNET 
SOLUTIONS



ILLINOIS
AAHAM

Fall Meeting Highlights!



Charles Garvin
Memorial Golf
Outing at Senica's
Oak Ridge Golf
Club!



First Place Team! John Currier, Marcus Padgett, Ron Snyder
Kenny Koerner.



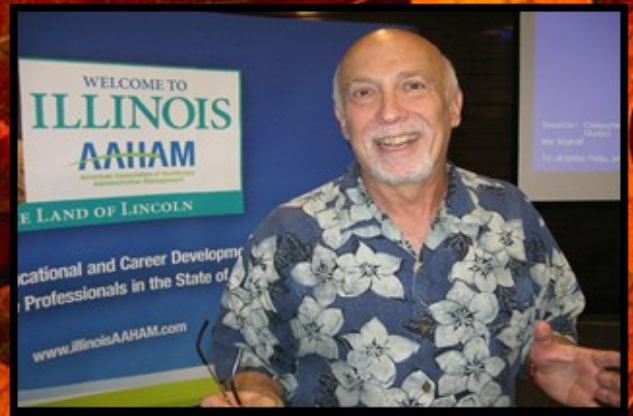
Fall Meeting Highlights!



Summer Meeting Highlights!



First Time Attendees.



Dr. Steven Sobel



Adele Allison, Success EHS



Katherine Murphy, Passport Health



Rena Willey with Carol Alcorn of PADS.

Revenue recovery worthy of your reputation.

Our proven strategies
help you collect more
without incurring cost.

HarrisCollect.com 866.781.4538



**HARRIS
&HARRIS**

REVENUE RECOVERY | ANALYTICS | ATTORNEYS



2013 Events Calendar

- April 3-4** **Legislative Day**
Hyatt Regency Capital Hill
Washington, DC
- June 5** **Board Meeting – Par-A-Dice Hotel**
- June 6** **Summer Education Meeting – Par-A-Dice Hotel**
Par- A-Dice Hotel
7 Blackjack Blvd
East Peoria, IL
- September 11** **Board Meeting – Senica’s Oakridge Golf Course**
- Charles Garvin Memorial Golf Outing –**
Senica’s Oakridge Golf Course
658 East Rt. 6
LaSalle, IL
- September 12** **Fall Education Meeting –**
Starved Rock Lodge & Conference Center
Rts. 178 & 71
Utica, IL
- December 4** **Board Meeting – Embassy Suites, East Peoria**
Vendor Reception
- December 5-6** **Annual State Institute – Embassy Suites, East Peoria**
Embassy Suites
100 Conference Center Drive
East Peoria, IL 61611



HBCS A revenue-energizing partner

Why do we consider ourselves a partner? Because a partner is integrated, enabling, enhancing and in it for the long haul. The mentality of working *with* you, rather than *for* you, allows us to be adaptable and expectation-exceeding. Our highly-trained staff and flexible, state-of-the-art technology uncover, recover and accelerate your revenue. In the truest sense, we're a revenue-generating partner that can be as large – or small – as you need us to be.

When your revenue is on the line, experience counts. HBCS opened its doors in 1985, and has served hundreds of healthcare clients throughout the U.S. In fact, some of our clients have been with us longer than our competitors have been in business. We are 100% healthcare focused, 100% U.S. based, and have been a VHA Preferred Business Partner for 10+ years.

- Complete Business Office Partnership
- Billing Services
- Insurance Maximization
- Self-Pay Customer Service
- Flex-Staffing

Call Jeff Porter at 877-254-9580 and start capturing the full value of the services you provide.

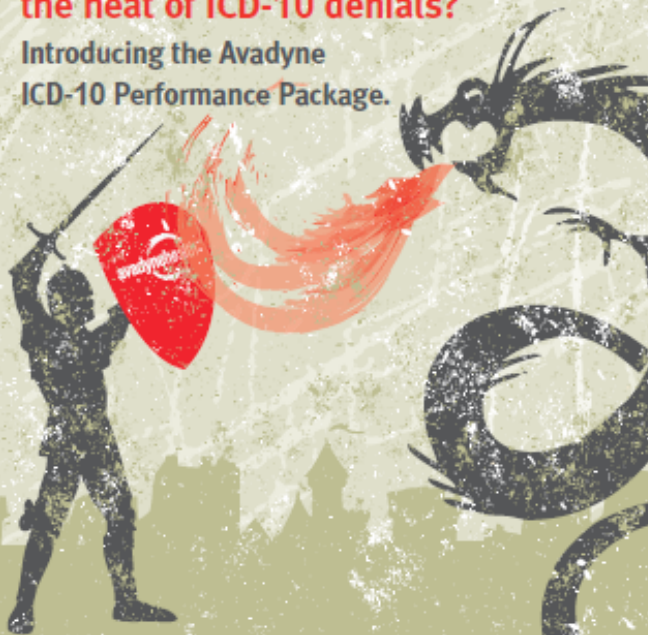


Visit our web site: www.hbcs.org/energize8

Energize your revenue cycle

Will you be ready to face the heat of ICD-10 denials?

Introducing the Avadyne ICD-10 Performance Package.



- Denial Follow-Up Technology
- Safetynet Staffing
- Trend Identification
- Denial Avoidance, Dashboards & Reports



Ron Snyder, FHFMA
Executive Vice President
563-349-0710 | Rsnyder@Avadynehealth.com

If you're looking for a partner you can trust to fulfill your receivables needs, why not select one that has been recognized time and time again by industry leaders?



Partnerships for a Lifetime

Serving the needs of the healthcare industry for more than 60 years!



STATE
COLLECTION SERVICE INC

800.477.7474
statecollectionsservice.com



Who says you can't have your cake & eat it too?



Get paid faster & easier!

You actually CAN have your cake and eat it too with Secure Bill Pay. Our cost-effective payment solution streamlines the entire payment process by combining all payment methods into one secure system--cash, check and credit/debit cards.

Patients are able to pay you online 24x7. Front office staff can easily take any form of payment at the point-of-service. Business office personnel have access to a virtual terminal to process transactions, set up automated payment plans and customize reports for simplified posting.

Make it fast and easy for your patients to pay, and your staff to manage your payment process.



Secure Bill Pay^{net}

www.securebillpay.net • 866.610.9601

Reduce A/R by offering patients more convenient payment options:

- Accept patient payments online
- Automate recurring and scheduled payments
- Capture 'guarantee of payment' at point-of-service; process payment after claim is adjudicated
- Accept all credit / debit cards & eCheck (direct from bank account)

Streamline payment posting:

- Process payments by phone, mail & point-of-service online
- Issue refunds electronically
- Real-time, custom reports and data export
- Auto-post to your practice management system

Security:

- PCI Compliant & HIPAA Compliant
- User-level audit trail



2012-2013 IL AAHAM Leadership



Officers

President

Kenny Koerner, CRCE-I, MBA
Director of Patient Accounts
CGH Medical Center
100 E. LeFevre
Sterling, IL 61081
Tele: 815.564.4407
Fax: 815.626.2896
Email: kkoern@cghmc.com



Chairman of the Board

Bill Carlson, CRCE-I
Director of Marketing
Allied Business Accounts, Inc.
PO Box 1600
Clinton, IA 52732
Tele: 800.533.0216
Fax: 319.352.5356
Email: wc@abacollect.com



First Vice-President

Chris Bryant
Patient Business Services Manager
Dr. John Warner Hospital
422 W. White Street
Clinton, IL 61727
Tele: 217.935.9571 x3211
Fax: 217.937.5262
EMail: chris.bryant@djwhospital.org



Second Vice-President

Rena Willey, CRCE-I
Director of Patient Financial Services
Memorial Hospital
P.O. Box 160
Carthage, IL 62321
Tele: 217.357.8696
Fax: 217.357.8697
Email: rwilley@mhtlc.org



Treasurer

Nancy Vollmer
Vice President of Sales
Eagle Recovery Associates, Inc.
424 SW Washington Street – 3rd Floor
Peoria, IL 61602
Tele: 309.272.4501
Fax: 309.272.1400
Email: nvollmer@eaglerecovery.net



Secretary

Kathy Uphoff
Director of Patient Financial Services
KSB Hospital
P.O. Box 737
Dixon, IL 61021
Tele: 815.285.5687
Fax: 815.285.5688
Email: kuphoff@ksbhospital.com



2012-2013 IL AAHAM Leadership



Directors

John McGlasson

Pro-Com Services of Illinois, Inc.
2427 South MacArthur Boulevard
Springfield, IL 62704
Tele: 888.633.8238 x. 4014
Fax: 800.345.7368
Email: mcglasson.john@pro-comservices.com



Doris Dickey, CRCE-I

Patient Financial Services Manager
Rochelle Community Hospital
900 North 2nd Street
Rochelle, IL 61068
Tele: 815.561.1620
Fax: 815.562.3131
Email: ddickey@rcha.net



Alan Staidl

Director
Horizon Financial Management
2800 Maple Avenue #33B
Downers Grove, IL 60515
Tele: 630.724.1197
Fax: 630.724.1197 (call first)
Email: maris65@sbcglobal.net



Maria Orwig

Director of Business Services
Graham Hospital
210 W. Walnut Street
Canton, IL 61520
Tele: 309.647.5240 Ext. 2211
Fax: 309.649.5110
Email: morwig@grahamhospital.org



Julie Van Pelt, CHFP, CPC, CRCS-I, CRCS-P

Vice-President of Operations, MedPay/PMD
Avadyne Health
7017 John Deere Parkway
Moline, IL 61265
Tele: 309.277.1547
Fax: 888.260.6020
Email: jvanpelt@avadynehealth.com



2012-2013 IL AAHAM Leadership



Tera Roesch, CRCS-I, CRCS-P
Assistant Director PFS
Gibson Area Hospital & Health Services
1120 N. Melvin Street
Gibson City, IL 60936
Tele: 217.784.2622
Fax: 217.784.5853
Email: Tera_Roesch@gibsonhospital.org



Joshua Johnson, CRCS-I, CRCS-P
Director of Patient Access
Gibson Area Hospital & Health Services
1120 N. Melvin Street
Gibson City, IL 60926
Tele: 217.784.2612
Fax: 217.784.2645
Email: josh_johnson@gibsonhospital.org



Robert Kemp
Director of Client Relations
Harris & Harris
222 Merchandise Mart Plaze, Suite 1900
Chicago, IL 60654
Tele: 312.423.7593
Email: bkemp@harriscollect.com

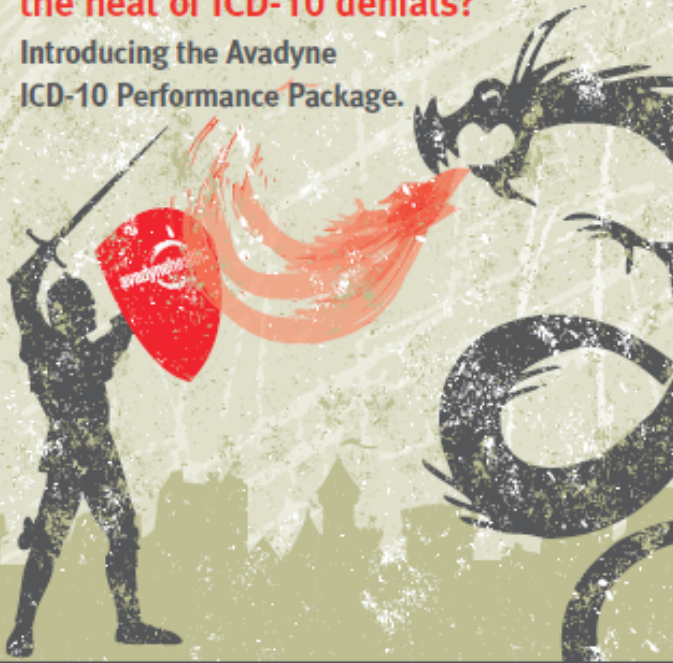


Donna Stortzum, RN, CPC, CPC - H
Director of Patient Financial Services
OSF Holy Family Medical Center
1000 West Harlem
Monmouth, IL 61462
Tele: 309.734.1401
Fax: 309.734.1689
Email: donna.r.stortzum@osfhealthcare.org



**Will you be ready to face
the heat of ICD-10 denials?**

Introducing the Avadyne
ICD-10 Performance Package.



Denial Follow-Up Technology • Safetynet Staffing
Trend Identification • Denial Avoidance, Dashboards & Reports



Ron Snyder, FHFMA
Executive Vice President
563-349-0710 | Rsnyder@Avadynehealth.com

Corporate Partners



ILLINOIS CHAPTER

2013 Corporate Partners

PLATINUM LEVEL

ARS / Magnet Solutions

www.ar-solutions.biz www.magnetsolutions.biz
Richard J. Rogers – richard.rogers@ar-solutions.biz

Berlin Wheeler, Inc.

www.bwmo.com
Shirley Mason – smason@bwmo.com

eProvider Solutions, LLC

www.eprovidersolutions.com
BJ Dvorak - bjdvorak@eprovidersolutions.com

Harris & Harris, LTD

www.harriscollect.com
Bob Kemp – bkemp@harriscollect.com

Healthcare Fiscal Management, Inc.

www.hfmi.com
Christopher Fisher – christopher@hfmi.com
Kristine Thimmesch - kristine@hfmi.com

Merchants' Credit Guide Company

www.merchantscreditguide.com
Heather Turcany – hturcany@collectmcg.com

Passport Health Communications, Inc. / Nebo Systems, Inc.

www.passporthealth.com
Fred Faller – fred.faller@passporthealth.com
Tim Friel – tim.friel@passporthealth.com

Secure Bill Pay, LLC

www.securebillpay.net
Terry Hauer – terry@securebillpay.net



Corporate Partners

GOLD LEVEL

Allied Business Accounts, Inc. / Health Care Billing Services, Inc.

www.abacollect.com

Bill Carlson, CPAM – wc@abacollect.com

Betty Marschang, CPAM – bmarschang@abacollect.com

AFNI, Inc.

www.afni.com

Steve Smith – stevesmith@afni.com

SILVER LEVEL

Avadyne Health

HBCS

Medical Business Resources, Inc.

MRSI

ProCom Services of Illinois, Inc.

Rockford Mercantile Agency, Inc.

State Collection Services, Inc.

Ron Snyder – rsnyder@avadynehealth.com

Jeff Porter – porter@hbcs.org

Maribeth Neelis – maribeth.neelis@answerdata.net

Keith Bull – kbull@medrecovery.com

John McGlasson – mcglasson.john@pro-comservices.com

Danielle Miller – dani@rmacollections.com

Brad Taylor – bradt@stcol.com

BRONZE LEVEL

Creditors Collection Bureau, Inc.

Eagle Recovery Associates, Inc

Horizon Financial Management

Managed Care Partners, Inc.

Medical Reimbursements of America

Quadax, Inc.

RRCA Accounts Management, Inc.

UCB, Inc.

Sue Glenzinski – sglenzinski@creditorscollection.com

Nancy Vollmer – nvollmer@eaglerecovery.net

Al Staidl – alanstaidl@yahoo.com

James Richmond – jrichmond@mngdcare.com

Veronica Modricker – vmodricker@mrareresults.com

Rick Albertini – rickalbertini@quadax.com

Kevin Heller – rrca@essex1.com

Doug Headman – daheadman@ucbinc.com

.....
For additional information regarding the Illinois AAHAM Corporate Partners program please contact Chris Bryant, 1st Vice President at chris.bryant@djwhospital.org

The Illinois AAHAM Chapter would like to thank our Corporate Partners for their continued support and dedication to the Chapter. Their partnership and generous financial support enable us to provide quality educational and networking opportunities throughout the year.





APPLICATION FOR NATIONAL MEMBERSHIP

NAME: _____ TITLE: _____

EMPLOYER/ORGANIZATION NAME: _____

PRIMARY ADDRESS: _____

CITY: _____ STATE: _____ ZIP: _____

PHONE: _____ FAX: _____ LOCAL CHAPTER: _____

E-MAIL ADDRESS: _____ WEBSITE: _____

HOME ADDRESS: _____

CITY: _____ STATE: _____ ZIP: _____ HOME PHONE: _____

How did you hear about AAHAM? Colleague Publication Website LinkedIn

If referred by AAHAM member, please give name: _____

Membership Type: National Member Student Member

NATIONAL MEMBERSHIP - The fee to become a National member is \$175. If you join anytime between July 1st and August 31st, the dues are \$140 for the rest of the current year. If you join between September 1st and December 31st, the fee is \$210 for the rest of the current year and all of the following year.

STUDENT MEMBERSHIP - The student membership fee is \$50. If you join between July 1st and August 31st, the pro-rated dues are \$35, and if you join between September 1st and December 31st, dues are \$65 (for 15 months of membership). To qualify for student membership you must currently be taking 6 credit hours per semester. Student members receive all the benefits of membership with the exception of voting, eligibility for professional certification, and cannot be a proxy for a chapter president at any national board meetings.

PAYMENT OPTIONS

For Credit Card Payment: Amex Visa MasterCard

Card Number: _____ Exp: _____

Name as it appears on card: _____

Signature: _____

Billing Address, if different from above: _____

Please allow two weeks for processing after your application is received at the national office. Dues are not tax deductible as a charitable contribution, but may be as a business expense.

Please note: Membership is on an individual, not institutional, basis and is non-transferable.

For Check Payment:

Please make checks payable to AAHAM and send application with your payment to:

AAHAM Membership
11240 Waples Mill Road, #200
Fairfax, VA 22030
Fax: 703-359-7562
AAHAM Tax ID: 23-1899873

YOUR PAYMENT TOTAL:

NATIONAL DUES: _____

LOCAL DUES: _____

TOTAL ENCLOSED: _____

AAHAM Providing Excellence in the Business of Healthcare
Certification, Compliance, Leadership Development, Networking, Advocacy



ILLINOIS
AAHAM



Local Chapters: AAHAM has 31 chapters throughout the US and India. Local chapters offer you more opportunities for education and networking. Please see the listing of local chapters below to help you decide which chapter you should belong to along with your National membership

Name of Chapter	Geographic Location	Chapter Dues	Please Check the Appropriate Codes in Each Category Below
Aksarben #01	Nebraska	\$0.00	Years in Healthcare: <input type="checkbox"/> 0-5 <input type="checkbox"/> 6-10 <input type="checkbox"/> 11-20 <input type="checkbox"/> 21-25 <input type="checkbox"/> 25+ Certification: <input type="checkbox"/> CHAM (NAHAM) <input type="checkbox"/> CHFP (HFMA) <input type="checkbox"/> FHFMA (HFMA) <input type="checkbox"/> CHCS (ACA) <input type="checkbox"/> Other (please list) Employer Type: <input type="checkbox"/> Vendor/Corporate Partner <input type="checkbox"/> Billing <input type="checkbox"/> Collection Agency <input type="checkbox"/> Consulting <input type="checkbox"/> Outsourcing <input type="checkbox"/> Software/IT <input type="checkbox"/> Provider <input type="checkbox"/> Law Firm <input type="checkbox"/> Other (please list) Position: <input type="checkbox"/> CFO <input type="checkbox"/> Vice President <input type="checkbox"/> Partner, Principal, Owner <input type="checkbox"/> Executive Director <input type="checkbox"/> Consultant <input type="checkbox"/> Director <input type="checkbox"/> Manager <input type="checkbox"/> Supervisor/Coordinator <input type="checkbox"/> PFS Representative <input type="checkbox"/> Patient Access Representative <input type="checkbox"/> Other (please list) Responsibility: <input type="checkbox"/> Accounting <input type="checkbox"/> Administration/Operations <input type="checkbox"/> Admitting/Access <input type="checkbox"/> Audit <input type="checkbox"/> Benefits <input type="checkbox"/> Budget <input type="checkbox"/> Compliance <input type="checkbox"/> Business Development, Sales, Marketing <input type="checkbox"/> Information Services/Technology <input type="checkbox"/> Managed Care <input type="checkbox"/> Medical Records <input type="checkbox"/> Medicare/Medicaid <input type="checkbox"/> PFS, Patient Billing & Collections <input type="checkbox"/> Reimbursement <input type="checkbox"/> Third Party Administration <input type="checkbox"/> Other (please list)
Florida Sunshine #03	Florida	\$40.00	
Carolina #04	North & South Carolina	\$30.00	
Evergreen #05	Washington State, West of the Mountains	\$30.00	
Gopher #06	Minnesota	\$40.00	
Hawkeye #07	Iowa	\$0.00	
Hawthorn #08	Missouri	\$45.00	
Illinois #09	Illinois	\$25.00	
Inland Empire #10	Washington State, East of the Mountains	\$25.00	
Keystone #11	Central Pennsylvania	\$25.00	
Maryland #13	Maryland	\$20.00	
Mountain West #14	Utah	\$30.00	
New Jersey #16	New Jersey	\$35.00	
Western Reserve #18	Ohio	\$0.00	
Northeast PA #19	North East Pennsylvania	\$30.00	
Rocky Mountain #21	Colorado	\$40.00	
Pine Tree #22	Maine	\$25.00	
Rushmore #23	North & South Dakota	\$0.00	
Western Region #26	Arizona and California	\$0.00	
Virginia #27	Virginia	\$30.00	
Philadelphia #29	Philadelphia, Pennsylvania	\$35.00	
Mid-York #31	New York	\$40.00	
Georgia #33	Georgia	\$30.00	
Connecticut #34	Connecticut	\$35.00	
Three Rivers #37	Pittsburgh, Pennsylvania	\$30.00	
Texas Bluebonnet #40	Texas	\$50.00	
Indiana #42	Indiana	\$25.00	
Wisconsin #44	Wisconsin	\$25.00	
Chennai #49	Chennai, India	\$0.00	
Music City #53	Tennessee	\$25.00	
Michigan #55	Michigan	\$0.00	

AAHAM Providing Excellence in the Business of Healthcare
 Certification, Compliance, Leadership Development, Networking, Advocacy

