

# The Lincoln Log

American Association of Healthcare Administrative Management Illinois Newsletter



Providing the Educational and Career Development Needs  
of Healthcare Professionals in the State of Illinois.

[www.IllinoisAAHAM.com](http://www.IllinoisAAHAM.com)

September 2014

1st Place Winner!!  
For Excellence in Journalism and Graphic Design,  
Winner of the 2011-2012 & 2012-2013 National AAHAM Journal  
Award!!





*The Illinois AAHAM Board of Directors would like to thank each one of you for your membership, support and participation!!*

*We look forward to another year of Awesome education and networking opportunities!*

*Doris, Kenny, Chris, Josh, Nancy, Tera, Julie, Maria, Rena, Dave, Vanessa, Jeff and CJ*



# Inside this edition...

President's Message

New Board Members Announced

Liability Reimbursement WEBINAR info!

Charles Garvin Golf Outing Highlights

August Meeting Highlights

Newly Certified Members

AAHAM's Ask and Answer

Jodie Edmonds, HFS Bulletins

2014 Calendar of IL AAHAM Events

IL AAHAM Leadership

IL AAHAM Corporate Partners

*IL AAHAM*

*Lincoln Log*

*Editor*



Joshua Johnson, CRCP-I

IL AAHAM 2nd Vice-President

The LINCOLN LOG magazine is published four times annually by the AAHAM ILLINOIS CHAPTER to update the membership regarding chapter and national activities as well as to provide information useful to health care administrative professionals. Opinions expressed in articles or features are those of the author(s) and do not necessarily reflect the views of the Illinois Chapter, AAHAM, the NATIONAL AAHAM organization or the editor. Reproduction and/or use of the format or content of this publication without the expressed permission of the author(s) or the editor is prohibited. © Copyright 2007.



# PRESIDENT'S

## *Message*



*Kenny Koerner, CRCE  
IL Chapter President*

School is back in session throughout Illinois. My three kids are now a Freshman (Gehrig), 7<sup>th</sup> grader (Elle) and 5<sup>th</sup> grader (Grant). It's hard to believe my oldest is already in high school. It seems like only yesterday I was moving to Sterling to begin a new phase of my career as the Director of Patient Accounts at CGH Medical Center. That was when Gehrig was 6 months old, my how time flies. With school starting, that always also means the Fall Illinois AAHAM golf outing and educational session. The golf outing is held each year in memory of former Illinois AAHAM president Chuck Garvin. I would like to thank everyone that came out this year on what was a very stormy morning and very sultry afternoon, to golf in honor of Chuck's memory.

This year's educational session was at the Par a Dice Hotel in E. Peoria and was a day packed with various types of educational messages. It was much needed for me, to connect with new friends, to reconnect with old friends, and to just take some time to recharge my batteries and to have some good laughs. Thanks to Josh Johnson and the program committee for doing another great job of finding a variety of educational topics that meet the needs of our diverse membership! Looking ahead, I know from the great discussion that was held at our board meeting, that the Annual State Institute coming up Dec 4<sup>th</sup> and 5<sup>th</sup> in E. Peoria is going to be a can't miss meeting! Please make plans to join us this year for top notch speakers that will share industry current messages. In addition to that, it is our annual awards banquet that is sure to have great food and entertainment to follow! More to come on that soon. I'd also like to thank your board of directors again for the countless hours they put in outside of their normal jobs to make this chapter such a great success. I'd encourage each of you to become involved in your local chapter. Even if you aren't serving on the board directors, there are many committees to serve on that will help you get your feet wet so that you can see what it is all about. You will find me and the rest of the board much more active in asking you to jump in to lend a hand in the coming months. Please take advantage of those opportunities when they are presented. I think you'll find as I have that the business networking and professional development is part of it, but that the friendships, laughs and just good people that you will meet are definitely the reason that you will keep coming back!

Hope to see everyone again soon!

Kenny





## *Board of Directors*

### *Welcomes NEW Board Member!*



Jeffrey D. Ogletree, MBA  
Vice President, Revenue Cycle  
Hospital Sisters Health System

Jeff Ogletree is the System Vice President of Revenue Cycle at Hospital Sisters Health System, a multi-institutional health care system comprised of 13 hospitals and an integrated physician network across Illinois and Wisconsin. Jeff earned a Master of Business Administration degree from Piedmont College and a Bachelor of Science degree in Consumer Economics from the University of Georgia. Jeff began his career in healthcare in 2001 as a Managed Care Analyst in Georgia and has enjoyed pursuing other healthcare related opportunities in Montana and Illinois. Outside of work, Jeff has a very active family with beautiful wife of over 18 years and five children from ages 3 to 15. Jeff enjoys sports and outdoor activities including RV'ing, golf and fishing.

# *Welcome!!!*





## *Board of Directors*

## *Welcomes NEW Board Member!*



### **Vanessa Haydon, CPAR**

Vice President, Account Management

Medical Reimbursements of America  
(MRA)

Franklin, TN 37067

**Vanessa Haydon, Vice President Account Management, Medical Reimbursements of America, Inc.** Ms. Haydon has worked for Franklin, TN based Medical Reimbursements of America, Inc. (MRA) for more than ten years. In her current role, Vanessa is responsible for the implementation and education of new clients in MRA services and processes, training of in-services to new and existing clients, financial performance reviews, issue management and effective client services. MRA delivers technology-enabled services that optimize reimbursement across the revenue cycle, creating additional revenue for hospitals and health systems nationwide.

# *Welcome!!!*





**Please join AAHAM for the**  
***How to get Reimbursement from the World's Dumbest Drivers Webinar***

**Date:**

Thursday,  
September 25, 2014  
11:00am - 12:30pm Central  
Time

**Register Now**

If you are unable to click the link above,  
please copy and paste the url below into  
your browser:

[https://www.signup4.net/Public/ap.aspx?  
OID=130&EID=ILLI17E](https://www.signup4.net/Public/ap.aspx?OID=130&EID=ILLI17E)

This webinar will cover Third Party Liability reimbursement issues related to motor vehicle accidents. Various types of coverages available under automobile and general liability policies and how those coordinate will be discussed. Emphasis will be placed upon identification of claims upon registration; coordinating TPL and health insurance benefits; and negotiating with attorneys.

**Cost:** \$35/per phone line

Presented by: Brad M. Williams is the founder and CEO of RevClaims, LLC.

Mr. Williams has been handling third party liability claims for healthcare providers since 2005. Prior to founding RevClaims, he was in private law practice and handled personal injury cases where he identified the need hospitals had for recovery assistance as it related to injury claims.

This webinar is geared toward front line Registration Staff, Billers, Customer Service Representatives and Collectors, PFS Directors, Supervisors and HIM staff.

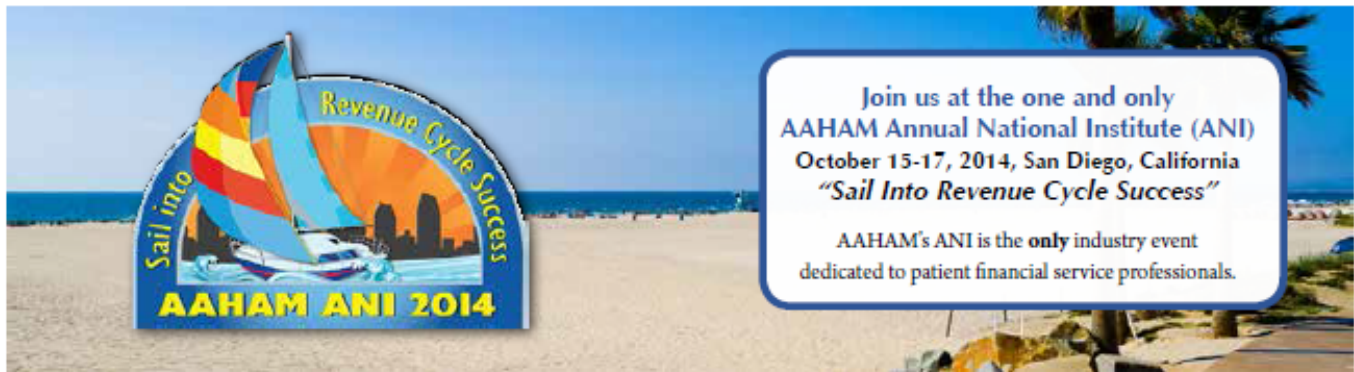


# 2014 AAHAM ANI



October 15-17, 2014  
Manchester Grand Hyatt  
San Diego, California





Join us at the one and only  
**AAHAM Annual National Institute (ANI)**  
 October 15-17, 2014, San Diego, California  
 "Sail Into Revenue Cycle Success"

AAHAM's ANI is the **only** industry event  
 dedicated to patient financial service professionals.

## Important reasons why you can't afford to miss AAHAM's ANI...

- Attend vibrant educational sessions on career focused topics
- Learn real solutions to day-to-day challenges from industry leaders
- Learn new techniques
- Acquire new skills
- Find out about the latest in products and services available to our industry
- Earn continuing education units (CEUs)
- Connect with colleagues and expand your network
- Find out about important topics impacting healthcare
- Affordable and cost effective education
- Fantastic networking opportunities

### Sail Into Revenue Cycle Success with AAHAM's industry-renowned speakers

This year we have three dynamic keynote speakers; Jack Singer, "Developing and Maintaining the Mindset of a Champion", [www.askdrjack.com](http://www.askdrjack.com) and Sheryl Roush, "How to Keep a Sparkling Attitude Everyday", [www.sparklepresentations.com](http://www.sparklepresentations.com). Alexandra Jaffe will also provide a legislative update. In addition to these popular keynotes, we have over 40 speakers on five separate healthcare tracks; *Management/Revenue Cycle, Access/Quality Management, Compliance, Leadership/Professional Development and Specialty*, all designed with your continuing education in mind. As a special bonus, there will be a special ICD10 round table and an academic medical center revenue cycle leader panel discussion brought to you by experts in the field. The ANI helps you become a more valuable resource to your facility and your colleagues. The ANI equips you with real solutions and new ideas you can put to use immediately.

## Who attends?

- Patient Financial Services Personnel
- Revenue Cycle Professionals
- Medical Billing Professionals
- Access Managers
- Coding Professionals
- Chief Financial Officers
- Patient Account Managers
- Business Office Personnel
- Medical Office Managers
- Finance Directors
- Compliance Officers
- Consultants

### AAHAM'S ANI offers you an active networking environment

Connect with others and expand your network with ANI events designed to maximize your opportunities for meeting a unique community of professionals who "do what you do." Enjoy this once a year, unique opportunity to network with colleagues and industry leaders from across the country, to share ideas and learn useful new solutions to your day-to-day challenges. AAHAM social events are an integral part of your learning and networking experience; a catalyst for building relationships in an interactive, fun and informative atmosphere.

### New Attitudes start in our Exhibit Hall

AAHAM exhibit hall solutions offer the latest array of products and services from vendors dedicated to the patient financial services profession; the fastest, most efficient way to find new partners, products and services. If it is new or innovative, you will find it in our exhibit hall. Vendor's include, software, EDI, billing and collection, receivable management, collections, government reimbursement, information systems, office management, recruitment and staffing, training, revenue auditing, office forms and supplies and consulting services.



**To provide education, certification, networking, and advocacy for healthcare revenue cycle professionals.**

The American Association of Healthcare Administrative Management (AAHAM) is a national professional association of thirty-two chapters and over 3000 healthcare patient financial services professionals from hospitals, clinics, billing offices, allied vendors, physicians and multi-physician groups. AAHAM members direct the activities of the thousands of people who are employed in the healthcare industry.

AAHAM is the preeminent professional organization for revenue cycle professionals and is known for its prestigious certification and educational programs. Advancing the professional development of its members is one of the primary goals of the association. AAHAM actively represents the interests of its members through a comprehensive program of legislative and regulatory monitoring and participation in industry groups such as WEDI, X12, DISA, and NUBC.





REGISTER ONLINE AT WWW.AAHAM.ORG

# 2014 ANI Registration Form

## October 15-17, 2014



Please PRINT or TYPE information exactly as it should appear on your badge. Each attendee must complete a separate registration form.  
NOTE: Confirmation will be emailed or faxed; please include both on this form.

I am a member of AAHAM:  Mbr. # \_\_\_\_\_

First Name: \_\_\_\_\_ Last Name: \_\_\_\_\_

Name on Badge (if different): \_\_\_\_\_

Title: \_\_\_\_\_

Company/Facility: \_\_\_\_\_

Address: \_\_\_\_\_

City: \_\_\_\_\_ State: \_\_\_\_\_ Zip: \_\_\_\_\_

Day Phone: \_\_\_\_\_ Mobile: \_\_\_\_\_

Email: \_\_\_\_\_

Emergency Contact: \_\_\_\_\_ Phone: \_\_\_\_\_

### CONCURRENT SESSIONS

Pre-registration for all concurrent sessions is required as seating is limited. Please rank your selections in order of preference 1 = first choice, 2 = second choice, 3 = third choice

Wednesday, October 15th 9:00am – 11:00am

\_\_\_ Certification Coaching Session "CRCE & CRCS Coaching Treasure Hunt"

Thursday, October 16th 11:00am – 12:30pm

\_\_\_ Operationalizing New Transparency Expectations and Requirements: The New Normal

\_\_\_ The Hidden Dangers of Billing Liability

\_\_\_ How to Make Self Pay Collections Work for Your Hospital

\_\_\_ The Speed of Trust

\_\_\_ CRCS Certification: Creating A Program for Success

Thursday, October 16th 2:00pm – 3:00pm

\_\_\_ Preparing for Health Reform-Improving Business Processes to Effectively Collect in a Consumer World

\_\_\_ Only an Ostrich Should Stick its Head in the Sand! A Practical Discussion on Marrying Compliance and Revenue Cycle Activities with Data Analytics

\_\_\_ Bookends of the Patient Experience: Little Company of Mary's Improvement Strategies from Admission to Discharge

\_\_\_ Managing Stress: Your Action Plan!

\_\_\_ ICD10 In Practice, What Are We Going To Do? Round Table Discussion

Thursday, October 16th 3:15pm – 4:15pm

\_\_\_ Operationalizing & Optimizing a revenue Cycle Shared Services Model

\_\_\_ Optimizing Return on Hospital Medicare Bad Debt While Passing the Auditor's Review

\_\_\_ Creative Data-driven Strategies to Improve Hospital Outcomes:

A Case Manager's Guide

\_\_\_ Communication in a Sound Bit Generation

\_\_\_ Windows Tips & Tricks

Friday, October 17th 9:15am – 10:15am

\_\_\_ Managing Bad Debt Unmanageable Times

\_\_\_ Fraud and Abuse-Current Trends and Enforcement Activities

\_\_\_ Registration Quality and Payment Estimator Tools: Lessons Learned

Sessions Description:

\_\_\_ Be Incredible

\_\_\_ Managing Through the Maze of Current Changes; The Impact From the ACA and ICD-10 On the Revenue Cycle (Part 1)

Friday, October 17th 10:30am – 11:30am

\_\_\_ PFS Revenue Cycle Open Forum

\_\_\_ How to Best Navigate the CMS IPPS 2014 Final Rule: Recommendations from a Medical Necessity Leader

\_\_\_ Surviving ACA Open Enrollment, Round 1

\_\_\_ BANG!

\_\_\_ Managing Through the Maze of Current Changes; The Impact From Listening to the Data Found in The Revenue Cycle (Part 2)

Please check:  First Time Attendee  CRCE-I  CRCE-P  CRCP-I  CRCP-P  CRCS-I  CRCS-P  CCT

How did you hear about the ANI?  Email  LinkedIn  Journal  Social Media

Other \_\_\_\_\_

### REGISTRATION FEES

Full registration receives one complimentary ticket to all events

Full Registration	AAHAM	Non-Member	
By August 15	\$ 590	\$ 690	\$ _____
By Sept 26	\$ 690	\$ 790	\$ _____
By Oct 10	\$ 790	\$ 890	\$ _____
Oct 11-Onsite	\$ 890	\$ 990	\$ _____
One Day Registration	\$ 300	\$ 430	\$ _____

Please check:  Wednesday  Thursday  Friday

Total Registration Due \$ \_\_\_\_\_

Join today and take the membership rate!

### GUEST TICKETS REQUESTED

\_\_\_ Wednesday Welcome Reception @ \$75 each \$ \_\_\_\_\_

\_\_\_ Thursday Breakfast @ \$25 each \$ \_\_\_\_\_

\_\_\_ Thursday Luncheon @ \$85 each \$ \_\_\_\_\_

\_\_\_ Thursday Awards Banquet @ \$175 \$ \_\_\_\_\_

\_\_\_ Thursday Presidents Reception @ \$75 each \$ \_\_\_\_\_

\_\_\_ Friday Breakfast @ \$25 each \$ \_\_\_\_\_

\_\_\_ Friday Luncheon @ \$85 each \$ \_\_\_\_\_

I am a  Executive Committee Member  Committee Chairperson

Past National President

Speaker, and as such I receive a complimentary registration

### PAYMENT

Check – payable to AAHAM

VISA  MasterCard  American Express  Discover

Credit Card #: \_\_\_\_\_

Exp. Date: / Verification Code: Billing Zip Code: \_\_\_\_\_

Name on Card \_\_\_\_\_

Signature \_\_\_\_\_

**ONLINE REGISTRATION IS ENCOURAGED: WWW.AAHAM.ORG**

MAIL form to:

AAHAM

P.O. Box 3348, Huntsville, AL 35810

Phone #: 256.852.4490

Online: www.aaham.org

Make Checks Payable to: AAHAM

No Cancellations will be accepted after September 12, 2014. Cancellations prior to this date will be subject to a \$100.00 administrative fee. All cancellations must be in writing. Refunds will not be given for no-shows at the conference. If you are unable to attend and have already registered, you may substitute someone in your place for a fee of \$100.00. Please submit changes in writing with payment. Registrations will not be processed without payment. The early registration rate is determined by date of receipt of payment. You may register online at www.aaham.org.



# **SAVE THE DATE!!!**

**Annual State Institute!**

**December 3-5th!!**

**Holiday Inn & Suites**

**East Peoria, IL**

**Watch for Details  
and Registration  
Information Soon!!**



# RevClaims

Revenue is no *Accident.*



**Injury Claims Billing**  
is our core business.

- + **MVA & Liability** Claims
- + **Workers' Compensation**
- + **Health Insurance** Subrogation

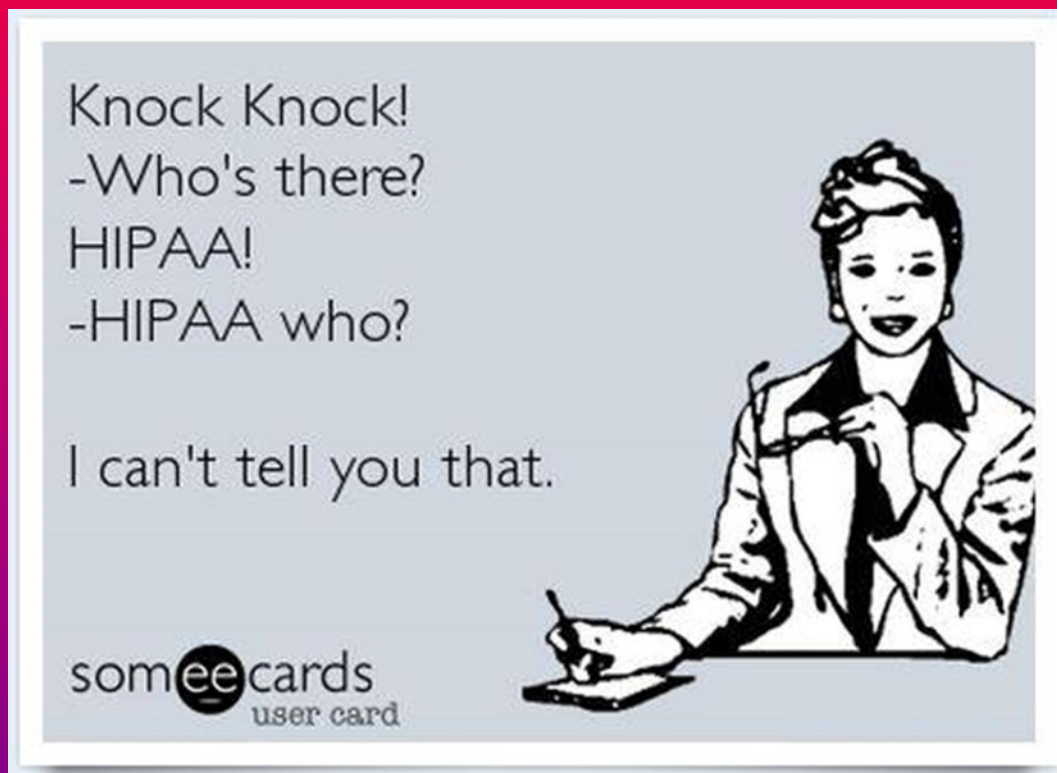


[revclaims.com](http://revclaims.com)

**Tony Taylor**  
RVP, Business Development  
740.405.0641  
[ttaylor@revclaims.com](mailto:ttaylor@revclaims.com)



# Take time to LAUGH!



"A day without laughter is a day wasted..." Charlie Chapman

# CUSTOMER SERVICE TIPS!



**Give People More than they Expect!**

(The little things matter the most!)

**SEE everything through your customer's eyes!**

(Everyone you see IS your customer!)

**Body Language always sets the tone!**

(A Simple smile can make all the difference!)

**You may have to step  
out of your comfort zone  
to provide excellent  
customer service!**



Your Healthcare  
Partner



# RSI Enterprises, Inc.

## Trusted Revenue Solutions

*RSI was established in 1986 and has become one of the fastest growing Revenue Solution providers in the U.S. with offices in Phoenix, AZ and Washington D.C. Metro.*

*Front, Middle and Back-End Accounts Receivable Services  
Services Include:*

*Medical Collections  
Customer Service / Extended Business Office  
Third-Party Insurance Billing & Follow-Up  
Early-Out Risk Management / Consulting  
Payment Plan Management  
Unique / Custom Solutions  
Advanced Resources / Technology / Online Access  
Results / Outcomes / Added Value*

**The RSI Enterprises, Inc. Solution for Value-Added Partnership**



[www.rsico.com](http://www.rsico.com)

**Gary Anzalone, Senior Sales Consultant**  
(W) (602) 627-2145 / (M) (262) 880-4304  
[gla@g2consulting-llc.com](mailto:gla@g2consulting-llc.com)

## Improving Financial Performance and Patient Relations

UCB, Inc. services a national market offering extended business office solutions and receivable management services. UCB offers the following programs to its healthcare clients:

- Pre-Registration
- Presumptive Charity Algorithm
- Propensity to Pay Analytics
- Eligibility Verification
- Early-Out/Self-Pay Programs
- Insurance Follow-up
- Bad Debt Recovery

Please Contact Douglas Headman, Vice President for additional information:  
(419) 356-6294 / [daheadman@ucbinc.com](mailto:daheadman@ucbinc.com)  
United Collection Bureau, Inc.



## Reputation Built On Results

### Recovery Is Our Business

Serving Healthcare Professionals  
Since 1958

Midwest Credit & Collection, Inc.  
217-423-3418  
800-535-6224  
[rwilson@mccionline.com](mailto:rwilson@mccionline.com)





I care for my patients.  
SVA cares for my practice.

## SVA CAN ASSIST WITH:

- Complete revenue cycle solutions
- ICD-10 readiness
- Compliance oversight
- Coding education, documentation and chart reviews
- Coding backlogs
- Account receivables analysis, follow-up and clean-up
- Healthcare consulting
- Professional and facility coding audits

 **SVA** | **Healthcare Services, LLC**  
Revenue Cycle Management, Consulting, and Coding Solutions

800.279.2616 • [www.sva.com](http://www.sva.com) \RevenueCycle • *Measurable Results.*



**SUCCESS**

**CRCE**

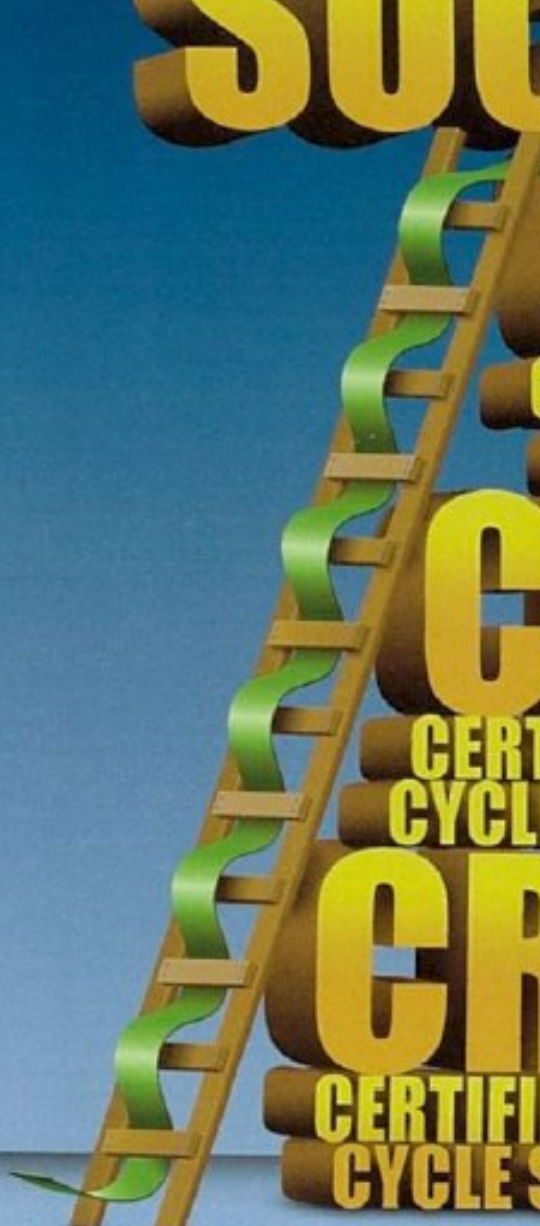
**CERTIFIED REVENUE  
CYCLE EXECUTIVE**

**CRCP**

**CERTIFIED REVENUE  
CYCLE PROFESSIONAL**

**CRCS**

**CERTIFIED REVENUE  
CYCLE SPECIALIST**



**AAHAM**

American Association of Healthcare  
Administrative Management

**AAHAM's Certifications are your ladder to success!**



ILLINOIS  
**AAHAM**

*NEWLY CERTIFIED TECHNICAL  
MEMBERS*

*CRCs-I AND CRCs-P*

**Congratulations!**

Mabel	Flores	CRCs-P	MedPay Management Systems
Davina	Garrison	CRCs-P	Med Pay Management Systems
Robert	Jacobsen	CRCs-P	Avadyne Health
Marcia	Savage	CRCs-I	Avadyne Health
Joseph	Slonecker	CRCs-I	Avadyne Health/MedPay

**Certification Schedule**

March 3, 2014 - Deadline for May 2014 Exam Period (May 12-23, 2014)

June 2, 2014 - Deadline for August 2014 Exam Period (August 11-22, 2014)

September 2, 2014 - Deadline for November 2014 Exam Period (November 10-21, 2014)

December 1, 2014 - Deadline for February 2015 Exam Period



# When patient accounts are past due, we're here to help.

We reduce days outstanding, lower the cost per account, and improve cash flow. Plus, we recognize the value of urgency to recover past-due account balances quickly, collect with care, and protect your brand equity.

## Receivables management solutions



### Past due collections

*Increase net recovery while protecting your brand.*



### Revenue cycle management

*Reduce costs and increase performance of ARM placements.*



### ICD-10 medical coding

*Reduce risk, and increase performance of medical procedures coding and billing processes.*



Smart Solutions. Beyond Expectations.

Acquisition & Enrollment | Care & Loyalty | Up-sell & Cross-sell | Receivables & Subrogation  
800-767-2364 | [afni.com](http://afni.com) | [afnicareers.com](http://afnicareers.com) | [solutions@afni.com](mailto:solutions@afni.com)





# CHARLES GARVIN MEMORIAL GOLF OUTING AUGUST 19, 2014



**Longest Women's  
Putt and Drive!!!  
Cheri Lockhart**



**Longest Men's Drive!  
Chris Fisher**



**Low Score Women's Team!  
Doris, Chris, Cheri & Julie**



**Longest Men's Putt!  
Al Staidl**



**Highest Score!!  
Chris, Eric, Josh and Mike!**





**Men's Low Score Team!  
Al, Dave, Bob & Ben**



**GREAT BBQ!**



**Ron, John, Kenny and Dave!**



**Doris Created a new game called...Tip the Cart! (Almost)**

**Hang On Doris!  
Chris is coming...LOL!**



**Doris Remembers  
Chuck Garvin...**

# Late Summer Meeting August 20th! East Peoria



AAHAM Gives!



Visitors from other states!



First Time Attendees!

Welcome to IL AAHAM!!



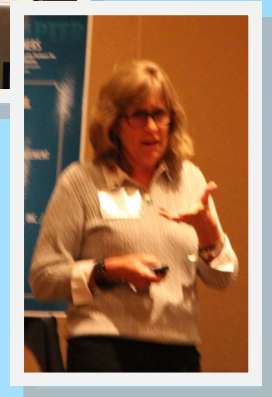
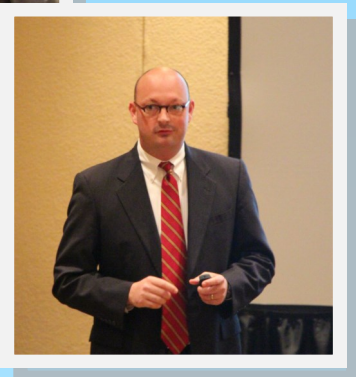
Networking!



Great Education!



AWESOME Presenters!!





MEDICAL  
REIMBURSEMENTS  
of AMERICA, INC.

VERONICA MODRICKER, CHFP  
REGIONAL VP OF SALES

7105 MOORES LANE  
BRENTWOOD, TN 37027  
CELL 309/912-0480  
EMAIL: vmodricker@MRAresults.com  
www.MRAresults.com



ENHANCED  
REVENUE RESOURCES  
FOR THE  
HEALTHCARE INDUSTRY

*The  
Optimum Choice  
for  
Reducing  
Accounts Receivables*





**NEBO SYSTEMS**  
PASSPORT HEALTH COMMUNICATIONS INC.

*Presents...*

# **PASSPORT eCare™** NEXT

## *Payment Certainty for Every Patient™*

Passport goes beyond connectivity, utilizing proprietary technology and business intelligence to **turn raw data into actionable information.**

The **automated, error-free workflow** created by Passport eCare™ NEXT allows you to manage all the financial components of every patient encounter and ensure *Payment Certainty for Every Patient™*.

Wherever where your patient encounter occurs, **Passport eCare™ NEXT integrated solution suites have you covered.**

**Orders > Scheduling > Patient Access > Best Payment > Claims  
Patient Engagement > Population Health Management**

- » One solution for your patient access and payment certainty needs
- » Integrated with your systems and workflow
- » Top-ranked customer support

Visit **[www.passporthealth.com](http://www.passporthealth.com)**  
or call **630-916-8818**



*Exceeding the Needs of the People We Serve*

**Berlin-Wheeler**

*Receivables Management*

*Since 1970*

1-800-366-2373



Since 1970 Berlin-Wheeler has been building rock solid client relationships based upon mutual trust, respect, experience, and performance.

Call us today to begin experiencing the service that you deserve.

At Berlin-Wheeler there really is a difference - our healthcare clients will tell you.

Call Shirley Mason @ 314-435-3377



Visit us on  
**Facebook**

Search for:

Illinois American Association of Healthcare Ad-  
ministrative Management



Tweet with us:

@AAHAMIL



Find us on LinkedIn: Search for  
AAHAM Illinois Chapter

## Your Trusted Partner In Performance

Founded in 1896, family owned & operated, our long term success offers health care professionals service, security, reliability & performance virtually unmatched in the industry.

We provide customized solutions:

### Extended Business Office

- Self-Pay First-Party Letters & Phone Campaigns
- Accelerates Cash-Flow
- Prevents Accounts From Becoming Past Due
- Patient Sensitive

### Pre-Collection

- Third-Party Impact at a Low Fixed Price
- Diplomatic
- Accelerates Cash-Flow

### Full Collection

- We get paid only if we collect
- Diplomatic, Professional Approach
- "Sometimes firm but always fair"
- Self Pay, Insurance Re-Billing
- Payment Arrangements
- Workers Comp / Liability Cases
- Skip Tracing, Skip Tracing, Skip Tracing
- Credit Reporting

**Please contact Heather Turcany  
today to discuss your collection needs  
815.405.2191 / hturcany@collectmcg.com**

ESTABLISHED 1896 | www.merchantscreditguide.com

**Merchants' Credit Guide**

Home Leadership Events Newsletter Photo Gallery Our Partners Q & A Forms

Providing the educational and career development needs of healthcare professionals in the State of Illinois.

Visit our Website at [www.illinoisaham.com](http://www.illinoisaham.com)



ILLINOIS  
AAHAM



# ROCKFORD MERCANTILE AGENCY, INC.

Solutions to your collection needs

68 YEARS OF MEDICAL COLLECTION EXPERIENCE  
"A" RATING WITH BETTER BUSINESS BUREAU  
CUSTOMIZED TO CLIENTS NEEDS

Danielle Miller  
EVP Sales & Marketing  
2502 S. Alpine Road  
Rockford, IL 61108  
800-369-6116

**PROSOURCE & JCC** J.C. Christensen  
The Professional Outsourcing Solution & Associates, Inc.  
Accounts Receivable Management

ARRAY SERVICES GROUP COMPANIES



1460 Renaissance Dr Suite 400  
Park Ridge, IL 60068

Randy Gelb  
Director of Business Development

Cell: 847-528-8207  
Direct: 847-954-4235  
Office: 888-751-9481 ext 235  
Fax: 888-515-1298  
rgelb@mbb.net

[www.mbb.net](http://www.mbb.net)

Healthcare Revenue Cycle Management Since 1932



ILLINOIS  
AAHAM

# ASK Illinois AAHAM?????

**ASK:**



Is it true that a senior must have Medicare Part A and Medicare Part B to join a Medicare Advantage plan?

**ANSWER:**



Yes, and they need to live in the plan's service area.

Medicare patients may join a Medicare Advantage Plan when they first become eligible for Medicare or during the annual enrollment period from October - December.



*Have a question that you think IL AAHAM might be able to answer?? Please go to our website at [www.illinoisaaaham.org](http://www.illinoisaaaham.org), click on the Q&A tab, and ask away!*



# ASK Illinois AAHAM?????

**ASK:**



Are the benefits of a Medicare Advantage Plan the same as Traditional Medicare?



**ANSWER:**

Not necessarily, and billing, preauthorization and other procedure coverage will vary from payer to payer. When scheduling a Medicare Replacement Plan patient, it is best to treat them as any insured patient when working with preauthorization, etc.



*Have a question that you think IL AAHAM might be able to answer?? Please go to our website at [www.illinoisahaham.org](http://www.illinoisahaham.org), click on the Q&A tab, and ask away!*





August 27, 2014

# Illinois HFS Bulletin



**NEBO SYSTEMS**  
A part of Experian

**Jodie Edmonds, VP Medicaid Revenue Consultant**

This is a complimentary bulletin for Medicaid information in Illinois. The author, **Jodie Edmonds**, worked for the State of Illinois Healthcare & Family Services for 33 years and is now the VP, Medicaid Revenue Consultant for Nebo Systems. If you would rather not receive this information, please click the unsubscribe link at the bottom of the page.

---

## The Medicaid Spenddown Program

Spenddown ended last December for parents and caretaker relatives on the Family Health program. It continues for pregnant women, children and those on AABD (seniors and people with disabilities).

MANY people who may have needed AABD in the past are now eligible for the new ACA Adult program, the income range for this population goes to 138% of the FPL. However for those children or AABD applicants whose income exceeds 138%, spenddown is still available.

HFS will be contacting the DHS Local Offices to reminder caseworkers about this policy.

---

## HFS Care Coordination Expansion Map

Family Health Plans (FHP) & Affordable Care Act (ACA) Health Plans have been added to the Care Coordination expansion. These health plans are all MCOs or MCCNs.

<http://www2.illinois.gov/hfs/SiteCollectionDocuments/CCExpansionMap.pdf>

These are not the only health plans that will be serving the FHP/ACA populations. ACEs and the CSN CCEs will also be serving these populations.

---

## Managed Care (MCO) Encounter Data Submitted to HFS

MCOs & MCCNs were notified by HFS that APL/EAPG services can only be billed on the 837I.

Several MCOs and MCCNs did request from HFS the capability to bill non-APL/EAPG ancillary services on the 837I instead of the 837P. After further analysis of the impact of this decision, HFS must still require that non-APL/EAPG ancillary services be submitted on the 837P.

## Potentially Preventable Readmissions (PPRs)

There will be no more PPR payment reductions. HFS has completed their reconciliation for SFY 2013 and a provider notice will soon be released.

The remaining amounts owed, if hospitals still owe, will be due to HFS in monthly payments. The provider notice will contain these details.

---

## Illinois Medicaid Hospital Rate Reform Updates

### EAPG Payment System

The following HFS policy does apply to Medicaid and Medicare Crossover claims both:

HCPCS Codes G0378 & G0379 are to be used to report observation services and direct admission for observation care.

If the claim contains Revenue Code 0762, then at least one Revenue Code Line for 0762 must have a corresponding Observation E & M code (99218, 99219, 99220, 99234, 99235 or 99236) and must have a second Revenue Code line 0762 with G0378.

If the claim only has one Revenue Code 0762 with G0379, the claim will reject for not having Revenue Code 0762 with one of the above Observation E & M codes.

- Error Code & Description: X75 (Missing/Invalid HCPCS for OBS Revenue Code)

The claim will also reject for not having Revenue Code 0762 with HCPCS Code G0378.

- Error Code & Description: M52 (observation bed charge required)

### Medicaid NCCI Edits

Medicare and Medicaid NCCI edits are very similar. The information displayed on the following website would be for the Medicaid EAPG NCCI edits <http://www.medicaid.gov/Medicaid-CHIP-Program-Information/By-Topics/Data-and-Systems/National-Correct-Coding-Initiative.html>

### Unclassified Drug Codes

- J3490 - UNCLASSIFIED DRUGS – EAPG Assignment 0435
- J3590 - UNCLASSIFIED BIOLOGICS – EAPG Assignment 0435
- J9999 - NOT OTHERWISE CLASSIFIED, ANTI-NEOPLASTIC DRUG – EAPG Assignment 0430

EAPGs 430 & 435 both have a weight of 0.00. No reimbursement would be made if these HCPCS Codes were billed for a drug with no assigned HCPCS Code.

### Episode Grouping

Providers should report the actual dates of service for all procedures which are part of the episode of care at the line level (any medical visit/significant procedures on the same date of service and associated lab and radiology services on or after that date service)

## Examples:

### ED Services than span more than One Date of Service

- Patient is admitted to the ED on 07/15/14 and is discharged on 07/16/14. The charge drops on the claim with a service date of 07/15/14, total charge of \$1000, HCPCS 99284 and Rev Code of 450.
- Services should be billed as follows on one claim form:

Revenue Code	HCPCS Code	Date of Service	Total Charges
O450	99284	07/15/14	\$500.00
O450	99284	07/16/14	\$500.00

- The total charges reported at the service line level will not impact the EAPG assignment.

### Same DOS, ED & Observation Split from the Inpatient Claim

- Patient is admitted to ED on 07/08/14 at 6 A.M., then admitted to OBS on 07/08/14 at 11:00 A.M. and subsequently admitted as an IP on 07/08/14 at 8:00 P.M.
- Based on HFS policy, either the ED OR the OBS service line can be billed and split from the Inpatient claim.
- If the ED and OBS services are billed together, HFS will only reimburse for the ED service.
- ED services are reimbursed in the EAPG Payment System based on the HCPCS code & primary diagnosis code. The reimbursement will vary as each combination will cause the service lines to group to different EAPG assignments.
- OBS services will group to EAPG 450 and the reimbursement would be as follows; Weight 0.7791 x Hospital Base Rate.

---

## HFS Erroneous K40 Rejections

In an e-mail from HFS on August 20, 2014, this issue still has not been resolved at HFS.



**Jodie Edmonds, VP, Medicaid Revenue  
Consultant, Nebo Systems**

August 28, 2014

# Illinois HFS Bulletin



**Jodie Edmonds, VP Medicaid Revenue Consultant**

This is a **revision of one article** from yesterday's complimentary bulletin for Medicaid information in Illinois.

The author, **Jodie Edmonds**, worked for the State of Illinois Healthcare & Family Services for 33 years and is now the VP, Medicaid Revenue Consultant for Nebo Systems. If you would rather not receive this information, please click the unsubscribe link at the bottom of the page.

---

## Illinois Medicaid Hospital Rate Reform Updates

### EAPG Payment System

#### Episode Grouping

Providers should report the actual dates of service for all procedures which are part of the episode of care at the line level (any medical visit/significant procedures on the same date of service and associated lab and radiology services on or after that date of service)

#### Examples:

##### ED Services that span more than One Date of Service

- Patient is admitted to the ED on 07/15/14 and is discharged on 07/16/14.
- **The Evaluation & Management Code for the ER service is billed for the Date of Service 7/15/14 only.**

##### Same DOS, ED & Observation Split from the Inpatient Claim

- Patient is admitted to ER on 07/08/14 at 6 A.M., then admitted to OBS on 07/08/14 at 11:00 A.M. and subsequently admitted as an IP on 07/08/14 at 8:00 P.M.
- Based on HFS policy, either the ED OR the OBS service line can be billed and split from the Inpatient claim. The ancillary services are billed on the inpatient claim.
- If the ED and OBS services are billed together, HFS will only reimburse for the ED service.
- **If the OBS is billed only, there will be NO EAPG assignment or reimbursement.**

Our People



Our Services

**Professional,  
Well Trained,  
Full-Time Dedicated  
EMPLOYEES!**

On-Site • 7 days per week • Includes ED,  
In-patient and Out-patient staffing •  
Staggered Hours of Coverage



"The people at HFMI are professional and responsive to all of our needs; the on-site staff members are trained extremely well. We feel completely comfortable with them as an extension of our hospital system."

- Director of Patient Eligibility at  
Cape Fear Valley Health Systems

**Our Mission:**

- Tailor a solution for your facility
- Assist with the management of your revenue cycle
- Ensure the highest probability of cash recovery
- Drive the reduction of bad debt



"Outdated collection techniques are eliminated. In-patient and out-patient financial representatives work closely with the patients to resolve account balances and reclaim lost revenue"

- Josie Burch, President of HFMI



Healthcare Fiscal Management Inc.  
1202 Washington  
Williamston, NC 27892  
1-800-584-5545  
www.hfmi.com



**Let us be your solution.**

We increase + accelerate your compliant revenue recovery of the rapidly growing self-pay segment.

CONTACT US 800.417.4845 | CARDONOUTREACH.COM

**CARDON OUTREACH**® 4185 Technology Forest Blvd., Ste 200  
The Woodlands, Texas 77381  
cardonoutreach.com • 800.417.4845

Eligibility Solutions | Patient Balance Resolution | Third Party Liability | QHP | SSI/SSDI



\*HFMA staff and volunteers determined that this product has met specific criteria developed under the HFMA Peer Review Process. HFMA does not endorse or guarantee the use of this product.

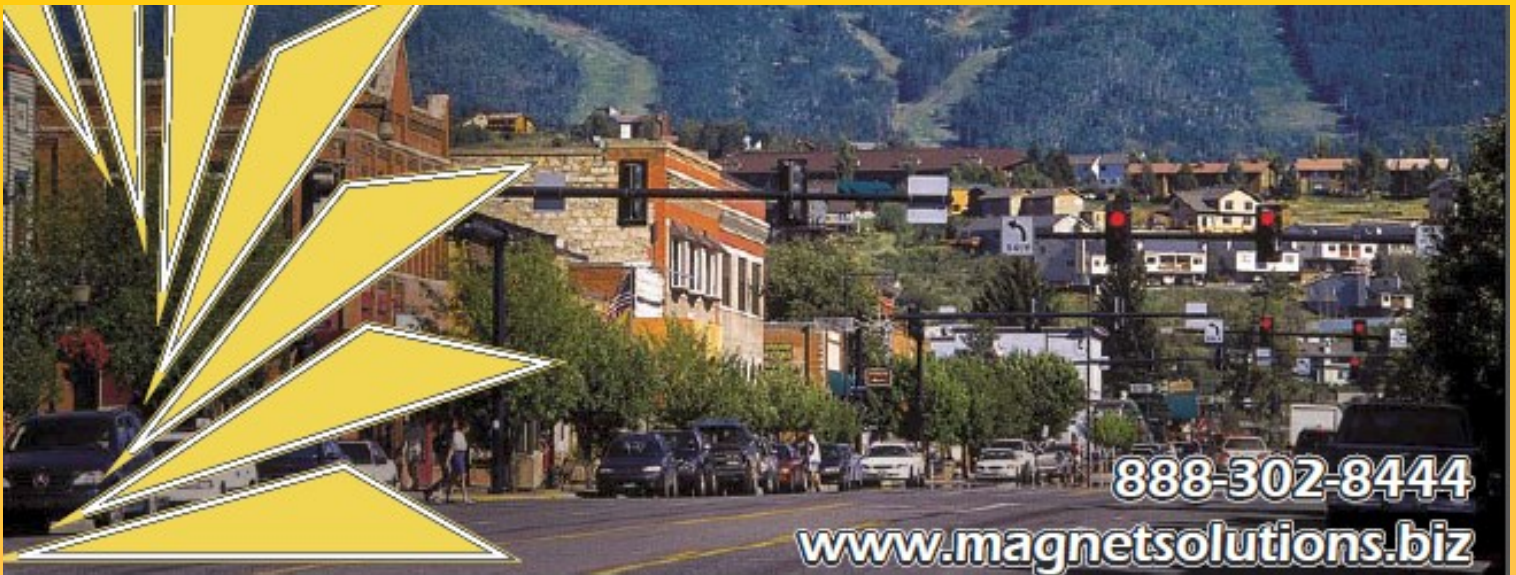


**NANCY VOLLMER**  
VP Sales & Marketing

424 SW Washington St.-3rd Floor  
Peoria, Illinois 61602  
P: 309.272.4501  
T: 800.906.3210  
F: 309.272.1400  
C: 309.258.2424

[nvollmer@eaglerecovery.net](mailto:nvollmer@eaglerecovery.net)





You've got a ***Community*** hospital to run

**Is your self-pay AR becoming a resource drain?**

**Magnet Solutions Provides:**

- ✓ Increased Cash and Cash-Flow
- ✓ Reduced Bad Debt Expense
- ✓ Increased Patient Satisfaction
- ✓ Optimized Communication Consistency

**Additional Services:**

Presumptive Charity Scoring  
Cash Acceleration Program (CAP)



*“Let us  
Represent  
the Caring  
Face of  
Your  
Community  
Hospital*”

**MAGNET**   
**SOLUTIONS**



ILLINOIS  
AAHAM

# Revenue recovery worthy of your reputation.

Our proven strategies  
help you collect more  
without incurring cost.

**HarrisCollect.com 866.781.4538**



**HARRIS  
& HARRIS**

REVENUE RECOVERY | ANALYTICS | ATTORNEYS



# 2014 Events Calendar

- March 20** IL AAHAM Certification Coaching Webinar
- April 3** IL AAHAM Board Meeting, Parke-Regency, Bloomington, IL  
**April 4** IL AAHAM Spring Education Meeting, Parke-Regency, Bloomington, IL
- April 23-24** Legislative Day  
Hyatt Regency Capital Hill  
Washington, DC
- May 5** IL AAHAM Board Meeting  
**May 6** Joint Meeting with ICAHN, Northfield Inn & Suites, Springfield, IL
- July 29** Webinar—Insurance 101
- August 19** IL AAHAM Board Meeting – Lick Creek, Pekin, IL  
**August 19** Charles Garvin Memorial Golf Outing –  
Lick Creek Golf Course, Pekin, IL  
**August 20** Fall Education Meeting –  
Par-a-dice Hotel and Casino, East Peoria, IL
- September 25** Webinar—Third Party Liability Reimbursement!
- December 3** Board Meeting –  
Vendor Reception  
East Peoria, IL
- December 4-5** Annual State Institute –  
East Peoria, IL



# HBCS A revenue-energizing partner

Why do we consider ourselves a partner? Because a partner is integrated, enabling, enhancing and in it for the long haul. The mentality of working *with* you, rather than *for* you, allows us to be adaptable and expectation-exceeding. Our highly-trained staff and flexible, state-of-the-art technology uncover, recover and accelerate your revenue. In the truest sense, we're a revenue-generating partner that can be as large – or small – as you need us to be.

When your revenue is on the line, experience counts. HBCS opened its doors in 1985, and has served hundreds of healthcare clients throughout the U.S. In fact, some of our clients have been with us longer than our competitors have been in business. We are 100% healthcare focused, 100% U.S. based, and have been a VHA Preferred Business Partner for 10+ years.

- Complete Business Office Partnership
- Billing Services
- Insurance Maximization
- Self-Pay Customer Service
- Flex-Staffing

Call Jeff Porter at 877-254-9580 and start capturing the full value of the services you provide.



Visit our web site:  
[www.hbcs.org/energize8](http://www.hbcs.org/energize8)

Energize your revenue cycle

Will you be ready to face the heat of ICD-10 denials?

Introducing the Avadyne ICD-10 Performance Package.



Denial Follow-Up Technology • Safetynet Staffing  
Trend Identification • Denial Avoidance, Dashboards & Reports



Ron Snyder, FHFMA  
Executive Vice President  
563-349-0710 | [Rsnyder@Avadynehealth.com](mailto:Rsnyder@Avadynehealth.com)

65 Years of Excellence  
1949-2014



Celebrating 65 years of service to the healthcare industry

PEER REVIEWED  
by HFMA

Healthcare Bad Debt Recovery



Revenue cycle solutions that are a real  
**PIECE OF CAKE!**

800.477.7474  
[statecollectionsservice.com](http://statecollectionsservice.com)



# Who says you can't have your cake & eat it too?



## Get paid faster & easier!

You actually CAN have your cake and eat it too with Secure Bill Pay. Our cost-effective payment solution streamlines the entire payment process by combining all payment methods into one secure system--cash, check and credit/debit cards.

Patients are able to pay you online 24x7. Front office staff can easily take any form of payment at the point-of-service. Business office personnel have access to a virtual terminal to process transactions, set up automated payment plans and customize reports for simplified posting.

Make it fast and easy for your patients to pay, and your staff to manage your payment process.



## Secure Bill Pay<sup>net</sup>

[www.securebillpay.net](http://www.securebillpay.net) • 866.610.9601

## Reduce A/R by offering patients more convenient payment options:

- Accept patient payments online
- Automate recurring and scheduled payments
- Capture 'guarantee of payment' at point-of-service; process payment after claim is adjudicated
- Accept all credit / debit cards & eCheck (direct from bank account)

## Streamline payment posting:

- Process payments by phone, mail & point-of-service online
- Issue refunds electronically
- Real-time, custom reports and data export
- Auto-post to your practice management system

## Security:

- PCI Compliant & HIPAA Compliant
- User-level audit trail



# 2014-2015 IL AAHAM Leadership

## Officers

### President

**Kenny Koerner, CRCE-I, MBA**  
Director of Patient Accounts  
CGH Medical Center  
100 E. LeFevre  
Sterling, IL 61081  
Tele: 815.564.4407  
Fax: 815.626.2896  
Email: [kkoern@cghmc.com](mailto:kkoern@cghmc.com)



### Chairman of the Board

**Doris Dickey, CRCE-I**  
Patient Financial Services Manager  
Rochelle Community Hospital  
900 North 2nd Street  
Rochelle, IL 61068  
Tele: 815.561.1620  
Fax: 815.562.3131  
Email: [ddickey@rcha.net](mailto:ddickey@rcha.net)



### First Vice-President

**Chris Bryant**  
Patient Business Services Manager  
Dr. John Warner Hospital  
422 W. White Street  
Clinton, IL 61727  
Tele: 217.935.9571 x3211  
Fax: 217.937.5262  
Email: [chris.bryant@djwhospital.org](mailto:chris.bryant@djwhospital.org)



### Second Vice-President

**Joshua A. Johnson, CRCS-I,P, CRCP-I**  
Director of Patient Financial Services  
Gibson Area Hospital & Health Services  
1120 N. Melvin Street  
Gibson City, IL 60926  
Tele: 217.784.2612  
Fax: 217.784.2645  
Email: [josh\\_johnson@gibsonhospital.org](mailto:josh_johnson@gibsonhospital.org)



### Treasurer

**Nancy Vollmer**  
Vice President of Sales  
Eagle Recovery Associates, Inc.  
424 SW Washington Street – 3rd Floor  
Peoria, IL 61602  
Tele: 309.272.4501  
Fax: 309.272.1400  
Email: [nvollmer@eaglerecovery.net](mailto:nvollmer@eaglerecovery.net)



### Secretary

**Tera Roesch, CRCS-I, CRCS-P**  
Assistant Director PFS  
Gibson Area Hospital & Health Services  
1120 N. Melvin Street  
Gibson City, IL 60936  
Tele: 217.784.2622  
Fax: 217.784.5853  
Email: [Tera\\_Roesch@gibsonhospital.org](mailto:Tera_Roesch@gibsonhospital.org)



# 2014-2015 IL AAHAM Leadership

## Directors

### **Vanessa Haydon, CPAR**

Vice President, Account Management  
Medical Reimbursements of America (MRA)  
6840 Carothers Parkway, Suite 150  
Franklin, TN 37067  
Tele: 615.339.4403  
Fax: 615.472.7401  
Email: [vhaydon@mrareresults.com](mailto:vhaydon@mrareresults.com)



### **Dave Miller**

Director, Client Services  
Passport Health  
Tele: 630.812.2557  
Email: [david.miller@passporthealth.com](mailto:david.miller@passporthealth.com)



### **Jeffrey D. Ogletree, MBA**

Vice President, Revenue Cycle  
Hospital Sisters Health System  
4936 Laverna Road  
Springfield, Illinois 62707-9456  
Tele: 217.492.5877  
Email: [jeff.ogletree@hshs.org](mailto:jeff.ogletree@hshs.org)



### **Maria Orwig**

Director of Business Services  
Graham Hospital  
210 W. Walnut Street  
Canton, IL 61520  
Tele: 309.647.5240 Ext. 2211  
Fax: 309.649.5110  
Email: [morwig@grahamhospital.org](mailto:morwig@grahamhospital.org)



### **C.J. Tonozi - CRCS-I**

OSF Healthcare System  
Eastern Region Compliance Specialist  
2200 East Washington Street  
Bloomington, IL 61701  
Tele: 309.665.4819



### **Julie Van Pelt, CHFP, CPC, CRCS-I,P, CRCE-I**

Vice-President of Operations, MedPay/PMD  
Avadyne Health  
7017 John Deere Parkway  
Moline, IL 61265  
Tele: 309.277.1547  
Fax: 888.260.6020  
Email: [jvanpelt@avadynehealth.com](mailto:jvanpelt@avadynehealth.com)



### **Rena Willey, CRCE-I**

Director of Patient Financial Services  
Memorial Hospital  
P.O. Box 160  
Carthage, IL 62321  
Tele: 217.357.8696  
Fax: 217.357.8697  
Email: [rwilley@mhtlc.org](mailto:rwilley@mhtlc.org)



# When You Need A Partner In Your Business Office...

Allied Business  
Accounts, Inc.

Health Care Billing  
Services, Inc.

Professional  
Billing Services



800-533-0216

## Accounts Receivable Management Services

BETTY MARSCHANG, CPAM

Director of Marketing

E-Mail: [bmarschang@abacollect.com](mailto:bmarschang@abacollect.com)

Cell: 815-441-0459

[www.abacollect.com](http://www.abacollect.com)

### Our Commitment

We are a viable resource to those who demand the best, and we continue to expand our client base despite the competition within the industry. The reason for our continual success can be summarized in two important words - SUPERIOR SERVICE!

We will serve you best no matter how large, or small, your collection needs, because we realize how important an above average recovery ratio can mean to your over-all bottom line. Our services are performed as if the future of our company depends upon the results we achieve - BECAUSE IT DOES!

Our priority is not to be the biggest - *it's to be the Best!* We will achieve this goal because as a collection agency, WE WORK HARD FOR YOUR MONEY!

#### CALL THE PROFESSIONALS TODAY!

723 FIRST STREET  
LA SALLE, IL 61301  
Telephone: (815) 223-0804  
Toll Free: (800) 383-0024  
Fax: (815) 223-0896

1256 W. JEFFERSON  
JOLIET, IL 60435  
Telephone: (815) 722-6300  
Fax: (815) 727-4383

400 N. DUDLEY  
MACOMB, IL 61455  
Telephone: (309) 836-7766  
Toll Free: (800) 383-0023  
Fax: (309) 833-5535

# CPI

#### MEMBERS:

Illinois Collectors Association  
American Collectors Association  
American Association of Healthcare  
Administrative Management

#### CALL THE PROFESSIONALS TODAY!

723 FIRST STREET  
LA SALLE, IL 61301  
Telephone: (815) 223-0804  
Toll Free: (800) 383-0024  
Fax: (815) 223-0896

1256 W. JEFFERSON  
JOLIET, IL 60435  
Telephone: (815) 722-6300  
Fax: (815) 727-4383

400 N. DUDLEY  
MACOMB, IL 61455  
Telephone: (309) 836-7766  
Toll Free: (800) 383-0023  
Fax: (309) 833-5535

[www.collprofinc.com](http://www.collprofinc.com)

# CPI

Collection Professionals, Inc.  
[www.collprofinc.com](http://www.collprofinc.com)

**You  
Work Hard  
for  
Your Money  
and  
SO DO WE!**



ILLINOIS  
AAHAM

# Corporate Partners



## ILLINOIS CHAPTER

### 2014 Corporate Partners

The Illinois AAHAM Chapter would like to thank our Corporate Partners for their continued support and dedication to the Chapter. Their partnership and generous financial support enable us to provide quality educational and networking opportunities throughout the year.

#### PLATINUM LEVEL

##### AFNI, Inc.

[www.afni.com](http://www.afni.com)

Jeff Hobbs - [jeffhobbs@afni.com](mailto:jeffhobbs@afni.com)

##### ARS / Magnet Solutions

[www.ar-solutions.biz](http://www.ar-solutions.biz)    [www.magnetsolutions.biz](http://www.magnetsolutions.biz)

Richard J. Rogers – [richard.rogers@ar-solutions.biz](mailto:richard.rogers@ar-solutions.biz)

##### Berlin-Wheeler Receivables Management

[www.bwmo.com](http://www.bwmo.com)

Shirley Mason – [smason@bwmo.com](mailto:smason@bwmo.com)

##### Certified Services, Inc.

[www.csicollects.com](http://www.csicollects.com)

Jim Ernst – [jimernst@csicollects.com](mailto:jimernst@csicollects.com)

##### Federal Companies

[www.federalcos.com](http://www.federalcos.com)

Jeff Bogdan – [jeff.bogdan@federalcos.com](mailto:jeff.bogdan@federalcos.com)

##### Harris & Harris, LTD

[www.harriscollect.com](http://www.harriscollect.com)

Bob Kemp – [bkemp@harriscollect.com](mailto:bkemp@harriscollect.com)

##### Passport Health Communications, Inc. / Nebo Systems, Inc.

[www.passporthealth.com](http://www.passporthealth.com)

Fred Faller – [fred.faller@passporthealth.com](mailto:fred.faller@passporthealth.com)

Tim Friel – [tim.friel@passporthealth.com](mailto:tim.friel@passporthealth.com)

##### RevClaims

[www.revclaims.com](http://www.revclaims.com)

Tony Taylor – [ttaylor@revclaims.com](mailto:ttaylor@revclaims.com)

##### Secure Bill Pay, LLC

[www.securebillpay.net](http://www.securebillpay.net)

Terry Hauer – [terry@securebillpay.net](mailto:terry@securebillpay.net)

##### SVA Healthcare Services

[www.sva.com](http://www.sva.com)

Jodi Hanoski - [hanoskij@sva.com](mailto:hanoskij@sva.com)



# Corporate Partners

## GOLD LEVEL

### Avadyne Health

[www.avadynehealth.com](http://www.avadynehealth.com)

Ron Snyder – [rsnyder@avadynehealth.com](mailto:rsnyder@avadynehealth.com)

### Healthcare Financial Resources, Inc.

[www.hfri.net](http://www.hfri.net)

David Dorman – [dcdorman@hfri.net](mailto:dcdorman@hfri.net)

### Healthcare Fiscal Management, Inc.

[www.hfmi.com](http://www.hfmi.com)

Christopher Fisher – [christopher@hfmi.com](mailto:christopher@hfmi.com)

### RSI Enterprises

[www.rsico.com](http://www.rsico.com)

Gary Anzalone – [gla@g2consulting-llc.com](mailto:gla@g2consulting-llc.com)

### The SSI Group, Inc.

[www.ssigroup.com](http://www.ssigroup.com)

Cindy Cunningham – [cindy.cunningham@ssigroup.com](mailto:cindy.cunningham@ssigroup.com)

## SILVER LEVEL

Collection Professionals, Inc.

HBCS

Midwest Credit & Collection, Inc.

MRSI

ProCom Services of Illinois, Inc.

ProSource Billing, Inc.

J.C. Christensen & Associates, Inc.

RevSpring, Inc.

Rockford Mercantile Agency, Inc.

State Collection Services, Inc.

Greg Himelick – [cpils1@ivnet.com](mailto:cpils1@ivnet.com)

Troy McCormick – [troy.mccormick@hbcs.org](mailto:troy.mccormick@hbcs.org)

Ron Wilson – [rwilson@mccionline.com](mailto:rwilson@mccionline.com)

Keith Bull – [kbull@medrecovery.com](mailto:kbull@medrecovery.com)

John McGlasson – [mcglasson.john@pro-comservices.com](mailto:mcglasson.john@pro-comservices.com)

Chuck Seviour – [chuck.seviour@arraysg.com](mailto:chuck.seviour@arraysg.com)

Dan Hartnett – [dhartnett@revspringinc.com](mailto:dhartnett@revspringinc.com)

Danielle Miller – [dani@rmacollections.com](mailto:dani@rmacollections.com)

Brad Taylor – [bradt@stcol.com](mailto:bradt@stcol.com)

## BRONZE LEVEL

Allied Business Accounts, Inc.

Healthcare Billing Services, Inc.

Cardon Outreach

Creditors Collection Bureau, Inc.

Eagle Recovery Associates, Inc.

IntelliHartx

Managed Care Partners, Inc.

Medical Business Bureau, LLC

Medical Reimbursements of America

Merchants' Credit Guide Company

RRCA Accounts Management, Inc.

Transworld Systems

UCB, Inc.

William C Carlson CRCE – [wc@abacollect.com](mailto:wc@abacollect.com)

Betty Marschang CRCE – [bmarschang@abacollect.com](mailto:bmarschang@abacollect.com)

Amber Frisbie – [afrisbie@cardonoutreach.com](mailto:afrisbie@cardonoutreach.com)

Sue Glenzinski – [sglenzinski@creditorscollection.com](mailto:sglenzinski@creditorscollection.com)

Nancy Vollmer – [nvollmer@eaglerecovery.net](mailto:nvollmer@eaglerecovery.net)

Bruce Tichenor – [brucetichenor@intellihartx.com](mailto:brucetichenor@intellihartx.com)

James Richmond – [jrichmond@mngdcare.com](mailto:jrichmond@mngdcare.com)

Randy Gelb – [rgelb@mbb.net](mailto:rgelb@mbb.net)

Veronica Modricker – [vmodricker@mraresults.com](mailto:vmodricker@mraresults.com)

Heather Turcany – [hturcany@collectmcg.com](mailto:hturcany@collectmcg.com)

Kevin Heller – [rrca@essex1.com](mailto:rrca@essex1.com)

Michael Paro [michael.paro@transworldsystems.com](mailto:michael.paro@transworldsystems.com)

Doug Headman – [daheadman@ucbinc.com](mailto:daheadman@ucbinc.com)





## APPLICATION FOR NATIONAL MEMBERSHIP

NAME: \_\_\_\_\_ TITLE: \_\_\_\_\_

EMPLOYER/ORGANIZATION NAME: \_\_\_\_\_

PRIMARY ADDRESS: \_\_\_\_\_

CITY: \_\_\_\_\_ STATE: \_\_\_\_\_ ZIP: \_\_\_\_\_

PHONE: \_\_\_\_\_ FAX: \_\_\_\_\_ LOCAL CHAPTER: \_\_\_\_\_

E-MAIL ADDRESS: \_\_\_\_\_ WEBSITE: \_\_\_\_\_

HOME ADDRESS: \_\_\_\_\_

CITY: \_\_\_\_\_ STATE: \_\_\_\_\_ ZIP: \_\_\_\_\_ HOME PHONE: \_\_\_\_\_

How did you hear about AAHAM?  Colleague  Publication  Website  LinkedIn

If referred by AAHAM member, please give name: \_\_\_\_\_

Membership Type:  National Member  Student Member

**NATIONAL MEMBERSHIP** - The fee to become a National member is \$175. If you join anytime between July 1st and August 31st, the dues are \$140 for the rest of the current year. If you join between September 1st and December 31st, the fee is \$210 for the rest of the current year and all of the following year.

**STUDENT MEMBERSHIP** - The student membership fee is \$50. If you join between July 1st and August 31st, the pro-rated dues are \$35, and if you join between September 1st and December 31st, dues are \$65 (for 15 months of membership). To qualify for student membership you must currently be taking 6 credit hours per semester. Student members receive all the benefits of membership with the exception of voting, eligibility for professional certification, and cannot be a proxy for a chapter president at any national board meetings.

## PAYMENT OPTIONS

**For Credit Card Payment:**  Amex  Visa  MasterCard

Card Number: \_\_\_\_\_ Exp: \_\_\_\_\_

Name as it appears on card: \_\_\_\_\_

Signature: \_\_\_\_\_

Billing Address, if different from above: \_\_\_\_\_

Please allow two weeks for processing after your application is received at the national office. Dues are not tax deductible as a charitable contribution, but may be as a business expense.

Please note: Membership is on an individual, not institutional, basis and is non-transferable.

**For Check Payment:**

*Please make checks payable to AAHAM and send application with your payment to:*

**AAHAM Membership**  
11240 Waples Mill Road, #200  
Fairfax, VA 22030  
Fax: 703-359-7562  
AAHAM Tax ID: 23-1899873

### YOUR PAYMENT TOTAL:

NATIONAL DUES: \_\_\_\_\_

LOCAL DUES: \_\_\_\_\_

TOTAL ENCLOSED: \_\_\_\_\_

AAHAM Providing Excellence in the Business of Healthcare  
Certification, Compliance, Leadership Development, Networking, Advocacy



ILLINOIS  
AAHAM



Local Chapters: AAHAM has 31 chapters throughout the US and India. Local chapters offer you more opportunities for education and networking. Please see the listing of local chapters below to help you decide which chapter you should belong to along with your National membership

Name of Chapter	Geographic Location	Chapter Dues	Please Check the Appropriate Codes in Each Category Below
Aksarben #01	Nebraska	\$0.00	<b>Years in Healthcare:</b> <input type="checkbox"/> 0-5 <input type="checkbox"/> 6-10 <input type="checkbox"/> 11-20 <input type="checkbox"/> 21-25 <input type="checkbox"/> 25+  <b>Certification:</b> <input type="checkbox"/> CHAM (NAHAM) <input type="checkbox"/> CHFP (HFMA) <input type="checkbox"/> FHFMA (HFMA) <input type="checkbox"/> CHCS (ACA) <input type="checkbox"/> Other (please list)  <b>Employer Type:</b> <input type="checkbox"/> Vendor/Corporate Partner <input type="checkbox"/> Billing <input type="checkbox"/> Collection Agency <input type="checkbox"/> Consulting <input type="checkbox"/> Outsourcing <input type="checkbox"/> Software/IT <input type="checkbox"/> Provider <input type="checkbox"/> Law Firm <input type="checkbox"/> Other (please list)  <b>Position:</b> <input type="checkbox"/> CFO <input type="checkbox"/> Vice President <input type="checkbox"/> Partner, Principal, Owner <input type="checkbox"/> Executive Director <input type="checkbox"/> Consultant <input type="checkbox"/> Director <input type="checkbox"/> Manager <input type="checkbox"/> Supervisor/Coordinator <input type="checkbox"/> PFS Representative <input type="checkbox"/> Patient Access Representative <input type="checkbox"/> Other (please list)  <b>Responsibility:</b> <input type="checkbox"/> Accounting <input type="checkbox"/> Administration/Operations <input type="checkbox"/> Admitting/Access <input type="checkbox"/> Audit <input type="checkbox"/> Benefits <input type="checkbox"/> Budget <input type="checkbox"/> Compliance <input type="checkbox"/> Business Development, Sales, Marketing <input type="checkbox"/> Information Services/Technology <input type="checkbox"/> Managed Care <input type="checkbox"/> Medical Records <input type="checkbox"/> Medicare/Medicaid <input type="checkbox"/> PFS, Patient Billing & Collections <input type="checkbox"/> Reimbursement <input type="checkbox"/> Third Party Administration <input type="checkbox"/> Other (please list)
Florida Sunshine #03	Florida	\$40.00	
Carolina #04	North & South Carolina	\$30.00	
Evergreen #05	Washington State, West of the Mountains	\$30.00	
Gopher #06	Minnesota	\$40.00	
Hawkeye #07	Iowa	\$0.00	
Hawthorn #08	Missouri	\$45.00	
Illinois #09	Illinois	\$25.00	
Inland Empire #10	Washington State, East of the Mountains	\$25.00	
Keystone #11	Central Pennsylvania	\$25.00	
Maryland #13	Maryland	\$20.00	
Mountain West #14	Utah	\$30.00	
New Jersey #16	New Jersey	\$35.00	
Western Reserve #18	Ohio	\$0.00	
Northeast PA #19	North East Pennsylvania	\$30.00	
Rocky Mountain #21	Colorado	\$40.00	
Pine Tree #22	Maine	\$25.00	
Rushmore #23	North & South Dakota	\$0.00	
Western Region #26	Arizona and California	\$0.00	
Virginia #27	Virginia	\$30.00	
Philadelphia #29	Philadelphia, Pennsylvania	\$35.00	
Mid-York #31	New York	\$40.00	
Georgia #33	Georgia	\$30.00	
Connecticut #34	Connecticut	\$35.00	
Three Rivers #37	Pittsburgh, Pennsylvania	\$30.00	
Texas Bluebonnet #40	Texas	\$50.00	
Indiana #42	Indiana	\$25.00	
Wisconsin #44	Wisconsin	\$25.00	
Chennai #49	Chennai, India	\$0.00	
Music City #53	Tennessee	\$25.00	
Michigan #55	Michigan	\$0.00	

AAHAM Providing Excellence in the Business of Healthcare  
 Certification, Compliance, Leadership Development, Networking, Advocacy

